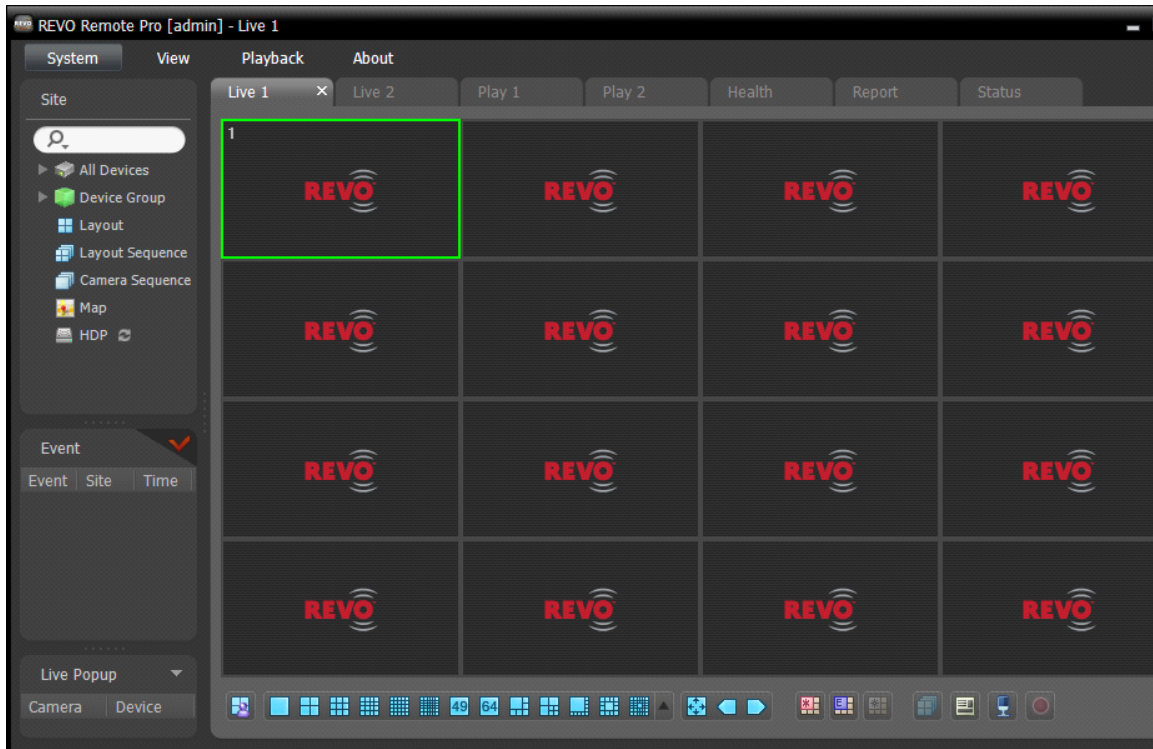
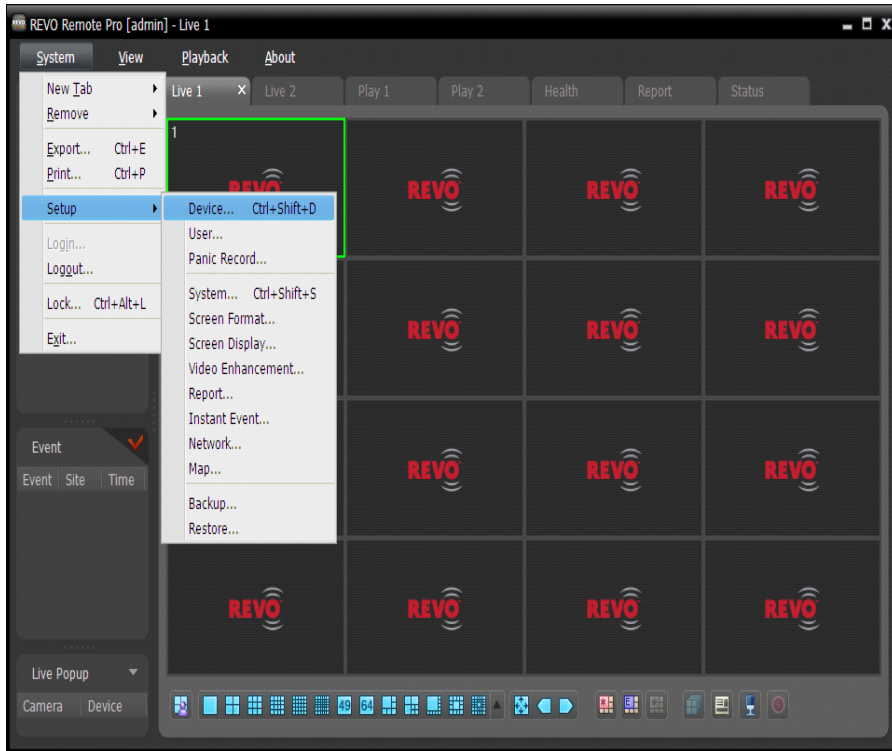


## NEW REVO REMOTE PRO SETUP

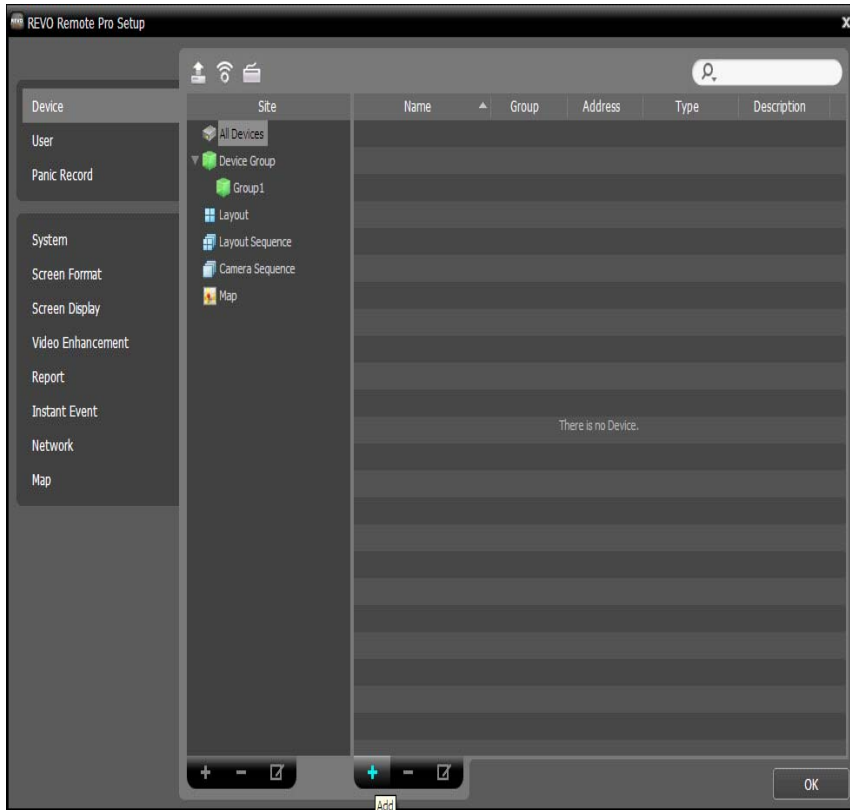
- Click on System tab and click on Setup and a dropdown menu will appear.



- Click Device.



- At the bottom of the page in the main area with the gray lines, click on the white plus sign to add a device to the software.

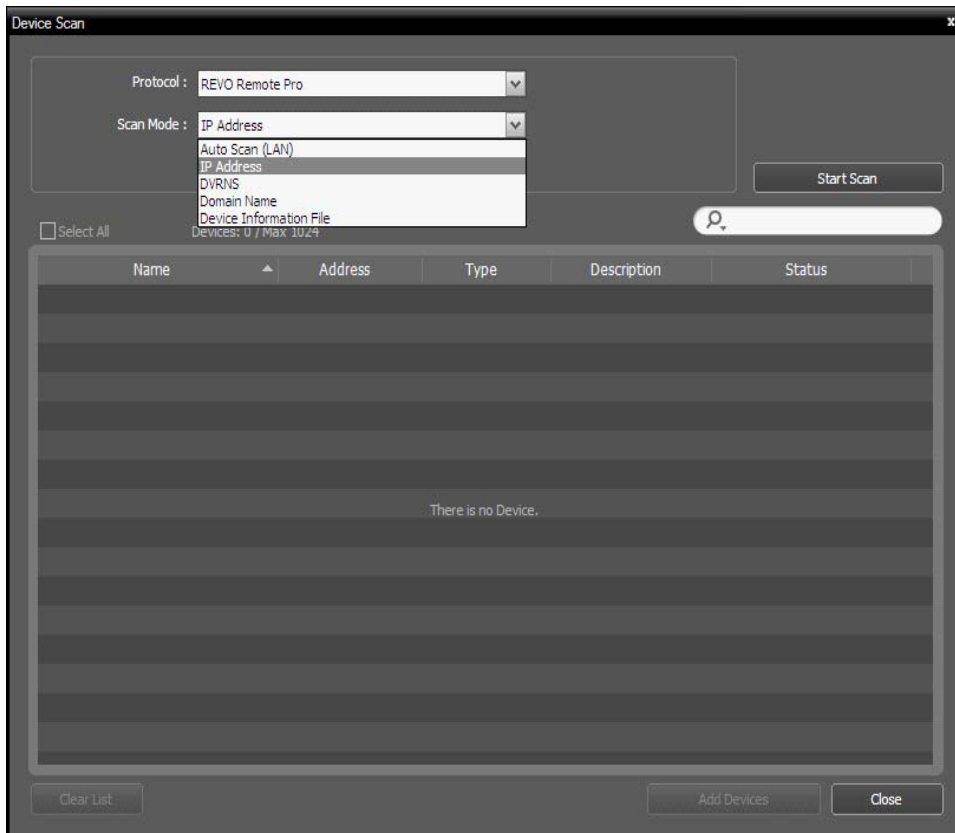


- Once you have clicked on the plus sign to add your site, the next screen to appear will allow you to choose the IP Address or the DVRNS mode on the SCAN Mode selection field.

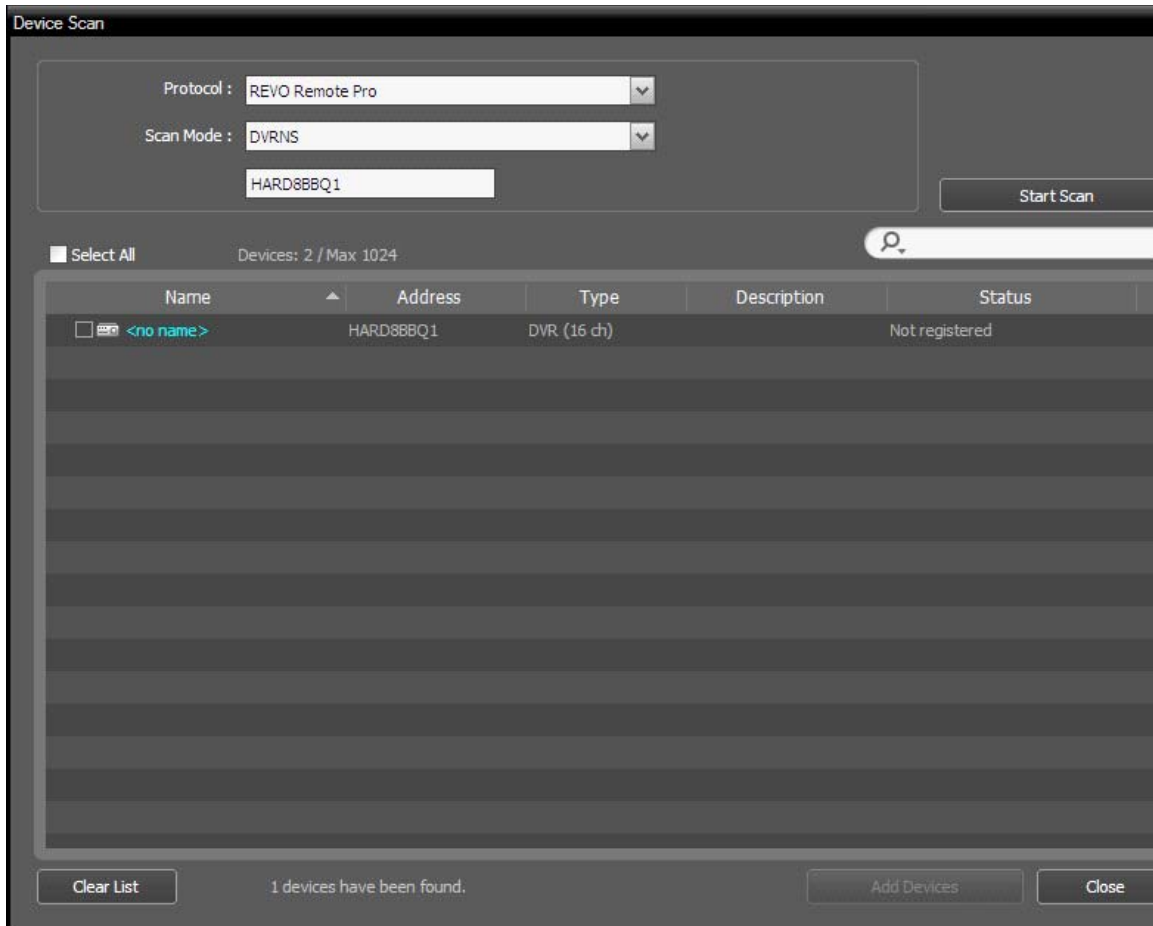
Note: IP mode allows you to use the internal or external numerical IP address to access.

Note: DVRNS mode: allows you to use your DVR'S name to gain access to your DVR system remotely.

Note: You mainly want to use the Dvrns mode.



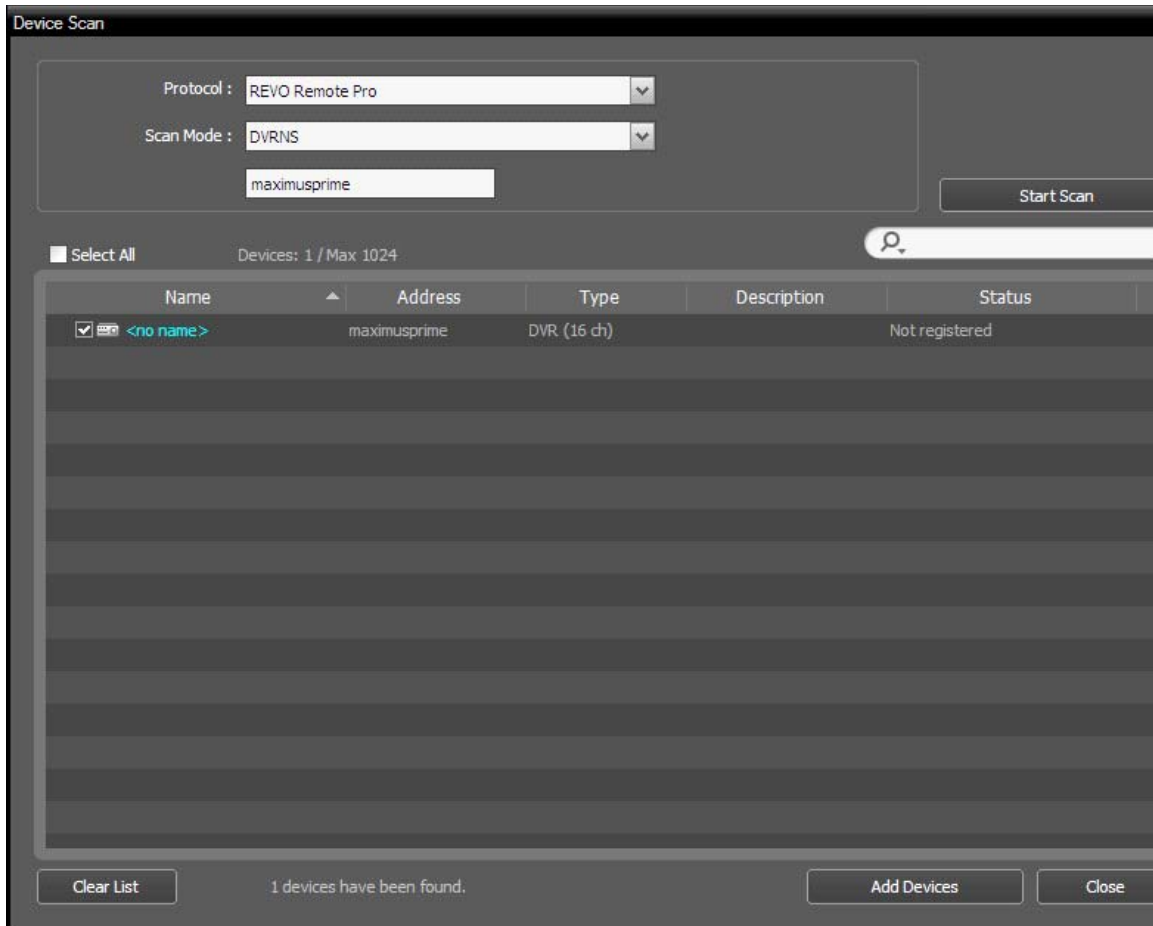
- Below the Scan Mode field will be a blank field to allow you to type in the DVR name or the IP address, depending on the mode that you selected.
- Type in the info and select start scan so that the software can make a connection with your DVR.
- After the start scan is complete, then it will add your DVR to the device list.



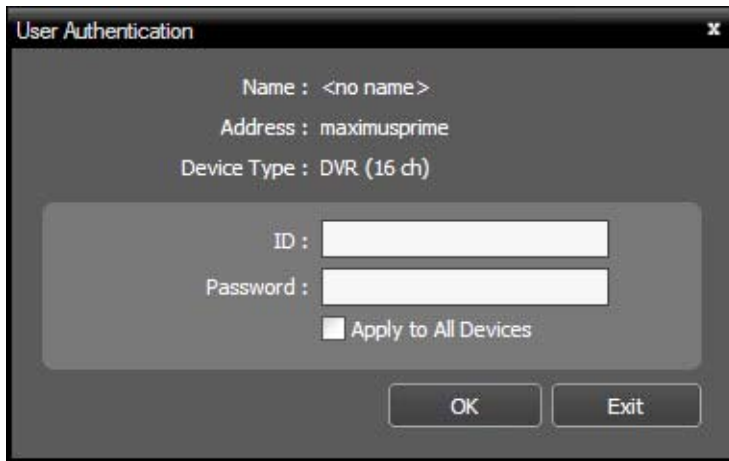
- Place a check in the square beside the area that reads no name and then click Add Devices.

Note: If the DVRNS has the "Site Name" (entered at the Dvr) the site name will show up here.

Note: If the box can't be checked, the DVR has already been added and saved. Click Close to see the device list.



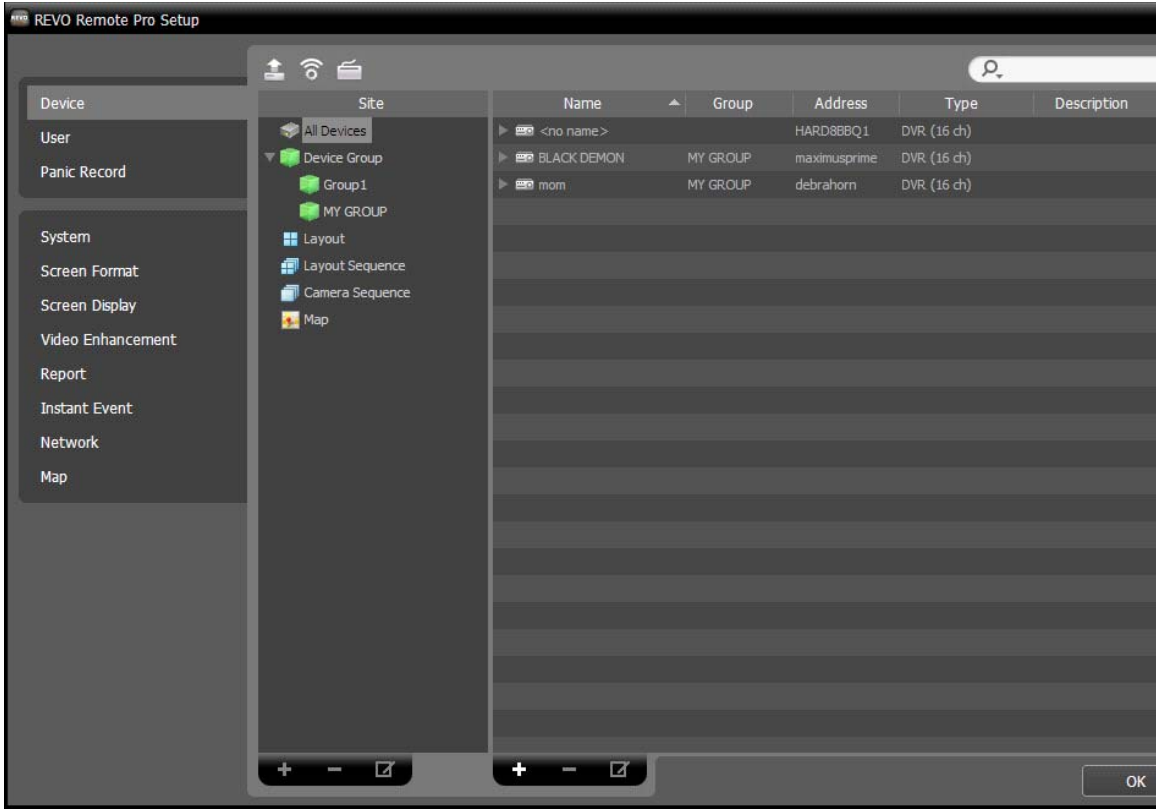
- After you click on start scan and it finds your Dvr, it will appear in your device list below.
- Click on the square beside your site name and then click on add devices at the bottom of the page.



The image shows a 'User Authentication' dialog box with a dark grey background. At the top left, the title 'User Authentication' is displayed, and at the top right is a close button icon. The dialog contains the following text and controls:

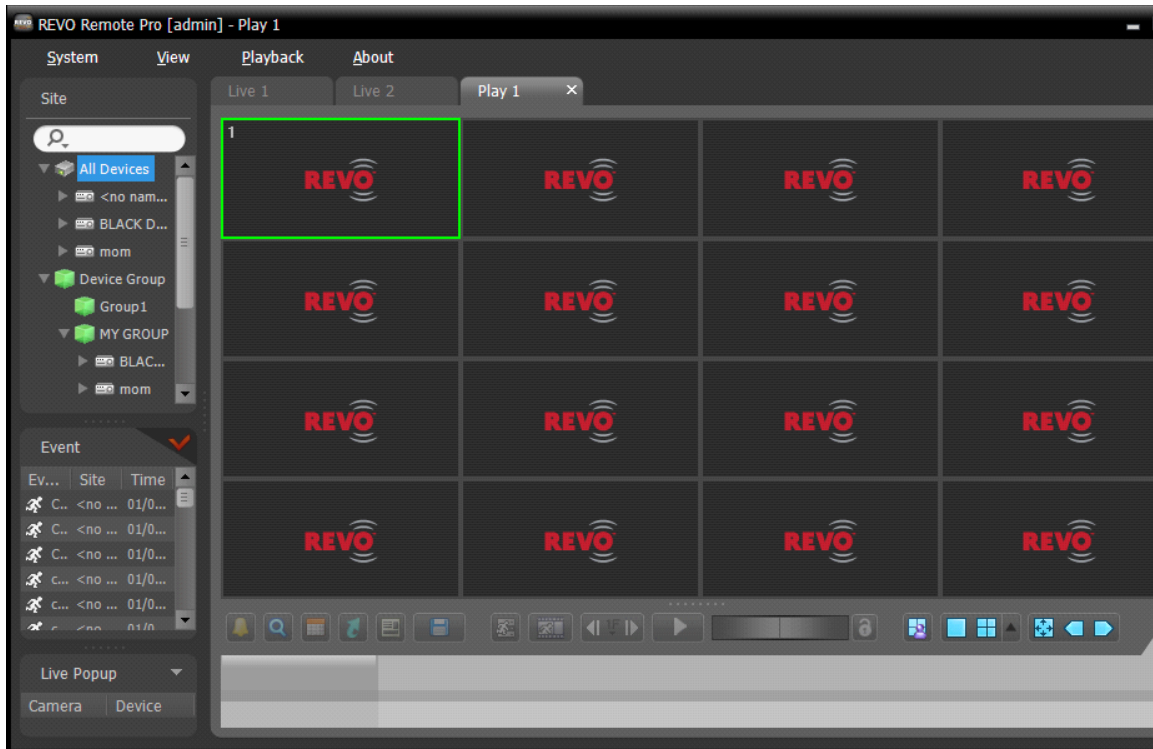
- Name : <no name >
- Address : maximusprime
- Device Type : DVR (16 ch)
- A central panel with a light grey background contains:
  - ID : [text input field]
  - Password : [text input field]
  - Apply to All Devices
- At the bottom, there are two buttons: 'OK' and 'Exit'.

- A USER authentication window will open you will need to enter the user ID (usually admin) and password to your DVR system and click OK and click Close.

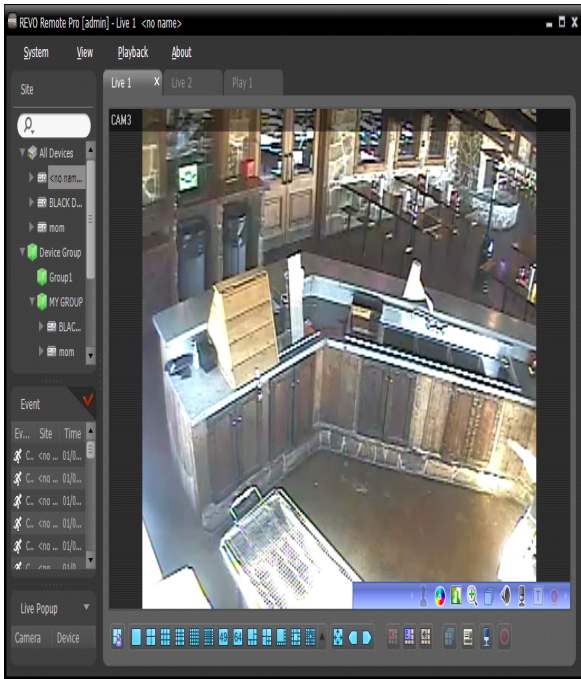


- Your DVR should appear in the list (the name will be in the Address field) Click OK.





- Click on the icon that reads All Devices and it will drop down your sites that you have added.
- Click on your site and drag over to the camera panes and your video should appear.



NOTE: MAKE SURE "LIVE1 OR "LIVE2" TAB IS SELECTED.