

REXT22-1

HIGH RESOLUTION 22x AF Zoom WDR Day & Night Camera





Please read this manual thoroughly before use, and keep it handy for future reference.

WARNING AND CAUTIONS

TO REDUCE THE RISK OF FIRE OR ELECTRIC SHOCK, DO NOT EXPOSE THIS PRODUCT TO RAIN OR MOISTURE.
DO NOT INSERT ANY METALLIC OBJECT THROUGH VENTILATION GRILLS.

CAUTION

	CAUTION RISK OF ELECTRIC SHOCK DO NOT OPEN	
WARNING : TO REDUCE THE RISK OF ELECTRIC SHOCK, DO NOT REMOVE COVER(OR BACK). NO USER-SERVICABLE PARTS INSIDE. REFER servicing TO QUALIFIED SERVICE PERSONNEL.		

EXPLANATION OF GRAPHICAL SYMBOLS



The lightning flash with arrowhead symbol, within an equilateral triangle, is intended to alert the user to the presence of uninsulated "dangerous voltage" within the product's enclosure that may be of sufficient magnitude to constitute a risk of electric shock to persons.



The exclamation point within an equilateral triangle is intended to alert the user to the presence of important operating and maintenance (servicing) instructions in the literature accompanying the product.

PRECAUTIONS

Safety

Should any liquid or solid object fall into the cabinet, unplug the unit and have it checked by qualified personnel before operating it any further.

Unplug the unit from the wall outlet if it is not going to be used for several days or more.

To disconnect the cord, pull it out by the plug. Never pull the cord itself.

Allow adequate air circulation to prevent internal heat build-up. Do not place the unit on soft surfaces (rugs, carpets, sofas, etc.) or near materials (curtains, draperies) that may block the ventilation holes.

Height and vertical linearity controls located on the rear panel are for special adjustments by qualified personnel only.

Installation

Do not install the unit in an extremely hot or humid place or in a place subject to excessive dust, mechanical vibration.

The unit is not designed to be waterproof. Exposure to rain or water may damage the unit.

Cleaning

Clean the unit with a slightly damp soft cloth. Use a mild household detergent. Never use strong solvents such as thinner or benzine as they might damage the finish of the unit.

Retain the original carton and packing materials for safe transport of this unit in the future.

FCC COMPLIANCE STATEMENT

INFORMATION TO THE USER: THIS EQUIPMENT HAS BEEN TESTED AND FOUND TO COMPLY WITH THE LIMITS FOR A CLASS A DIGITAL DEVICE, PURSUANT TO PART 15 OF THE FCC RULES. THESE LIMITS ARE DESIGNED TO PROVIDE REASONABLE PROTECTION AGAINST HARMFUL INTERFERENCE WHEN THE EQUIPMENT IS OPERATED IN A COMMERCIAL ENVIRONMENT. THIS EQUIPMENT GENERATES, USES, AND CAN RADIATE RADIO FREQUENCY ENERGY AND IF NOT INSTALLED AND USED IN ACCORDANCE WITH THE INSTRUCTION MANUAL, MAY CAUSE HARMFUL INTERFERENCE TO RADIO COMMUNICATIONS. OPERATION OF THIS EQUIPMENT IN A RESIDENTIAL AREA IS LIKELY TO CAUSE HARMFUL INTERFERENCE IN WHICH CASE THE USER WILL BE REQUIRED TO CORRECT THE INTERFERENCE AT HIS OWN EXPENSE.

CAUTION: CHANGES OR MODIFICATIONS NOT EXPRESSLY APPROVED BY THE PARTY RESPONSIBLE FOR COMPLIANCE COULD VOID THE USER'S AUTHORITY TO OPERATE THE EQUIPMENT.

THIS CLASS A DIGITAL APPARATUS COMPLIES WITH CANADIAN ICES-003.

CET APPAREIL NUMÉRIQUE DE LA CLASSE A EST CONFORME À LA NORME NMB-003 DU CANADA.

CE COMPLIANCE STATEMENT

WARNING: This is a Class A product. In a domestic environment this product may cause radio interference in which case the user may be required to take adequate measures.

IMPORTANT SAFEGUARDS

1. Read these instructions.
2. Keep these instructions.
3. Heed all warnings.
4. Follow all instructions.
5. Do not use this apparatus near water.
6. Clean only with dry cloth.
7. Do not block any ventilation openings. Install in accordance with the manufacturer's instructions.
8. Do not install near any heat sources such as radiators, heat registers, stoves, or other apparatus (including amplifiers) that produce heat.
9. Do not defeat the safety purpose of the polarized or grounding-type plug.
A polarized plug has two blades with one wider than the other.
A grounding type plug has two blades and a third grounding prong.
The wide blade or the third prong are provided for your safety. If the provided plug does not fit into your outlet, consult an electrician for replacement of the obsolete outlet.
10. Protect the power cord from being walked on or pinched particularly at plugs, convenience receptacles, and the point where they exit from the apparatus.
11. Only use attachments/accessories specified by the manufacturer.
12. Use only with the cart, stand, tripod, bracket, or table specified by the manufacturer, or sold with the apparatus. When a cart is used, use caution when moving the cart/apparatus combination to avoid injury from tip-over.
13. Unplug this apparatus during lightning storms or when unused for long periods of time.
14. Refer all servicing to qualified service personnel. Servicing is required when the apparatus has been damaged in any way, such as power-supply cord or plug is damaged, liquid has been moisture, does not operate normally, or has been dropped.
15. **CAUTION THESE SERVICING INSTRUCTIONS ARE FOR USE BY QUALIFIED SERVICE PERSONNEL ONLY. TO REDUCE THE RISK OF ELECTRIC SHOCK DO NOT PERFORM ANY SERVICING OTHER THAN THAT CONTAINED IN THE OPERATING INSTRUCTIONS UNLESS YOU QRE QUALIFIED TO DO SO.**
16. **Use Certified/Listed Class 2 power source only.**

TABLE OF CONTENTS

1. INTRODUCTION	6
1.1 THE CAMERA FEATURES	6
2. SYSTEM INSTALLATION	7
2.1 PACKAGE CONTENTS	7
2.2 OPERATION REQUIREMENTS	8
2.3 BASE INSTALLATION	9
2.4 Adjusting the 3-Axis Bracket	10
2.5 HEATER (Operating temperature)	10
3. CONNECTION	11
3.1 COLOR LEAD WIRE & COLOR DISPLAY LABEL	11
3.2 EXTERNAL INPUT	12
3.3 EXTERNAL OUTPUT	12
3.4 RS-485 CONNECTION	12
3.5 EXTERNAL A/D KEY CONTROL	13
4. CAMERA ADJUSTMENT	14
4.1 OSD MAIN SCREEN	14
4.2 MAIN MENU	14
5. TROUBLESHOOTING AND MAINTENANCE	20
5.1 TROUBLESHOOTING	20
5.2 MAINTENANCE	20
6. DIMENSIONS	21
7. SPECIFICATIONS	22

1. INTRODUCTION

The 22x Auto Focus Zoom WDR Day & Night Camera provides especially for closed circuit television (CCTV) and security surveillance application.

1.1 THE CAMERA FEATURES

- SONY 1/4" 960H Super HAD CCD II (700 TV Lines)
- 352x zooming capability (Optical : 22x / Digital : 16x)
- 0.1 lux (Color), 0.01 lux (B/W), 0.00 lux(IR LED On)
- Excellent picture quality
- Various picture effects
- Support camera control available RS-485
- Built-in Fan & Heater
- Rugged, Compact Specially Designed for installable anywhere (Indoor / Outdoor, IP66)
- Dual power operation AC 24V / DC 12V

CAUTION : Use Certified/Listed Class 2 power source only.

- Function :
 - D/N (Day / Night)
 - DSS (Digital Slow Shutter)
 - DIS(Digital Image stabilizer)
 - WDR (Wide Dynamic Range)
 - DNR (Digital Noise Reduction)
 - 70 Power IR LEDs
 - M/D (Motion Detection)
 - AWB (Auto White Balance)
 - AE (Auto Exposure)
 - AGC (Auto Gain Control)
 - BLC (Back Light Compensation)
 - OSD (On Screen Display)
 - ZOOM PRESET & TOUR
 - P/M(Privacy Mask)
 - ALARM(Alarm out)



IMPORTANT : The user of this camera is responsible for checking and complying with local, state, and federal laws and statutes concerning the recording and monitoring of audio signals.

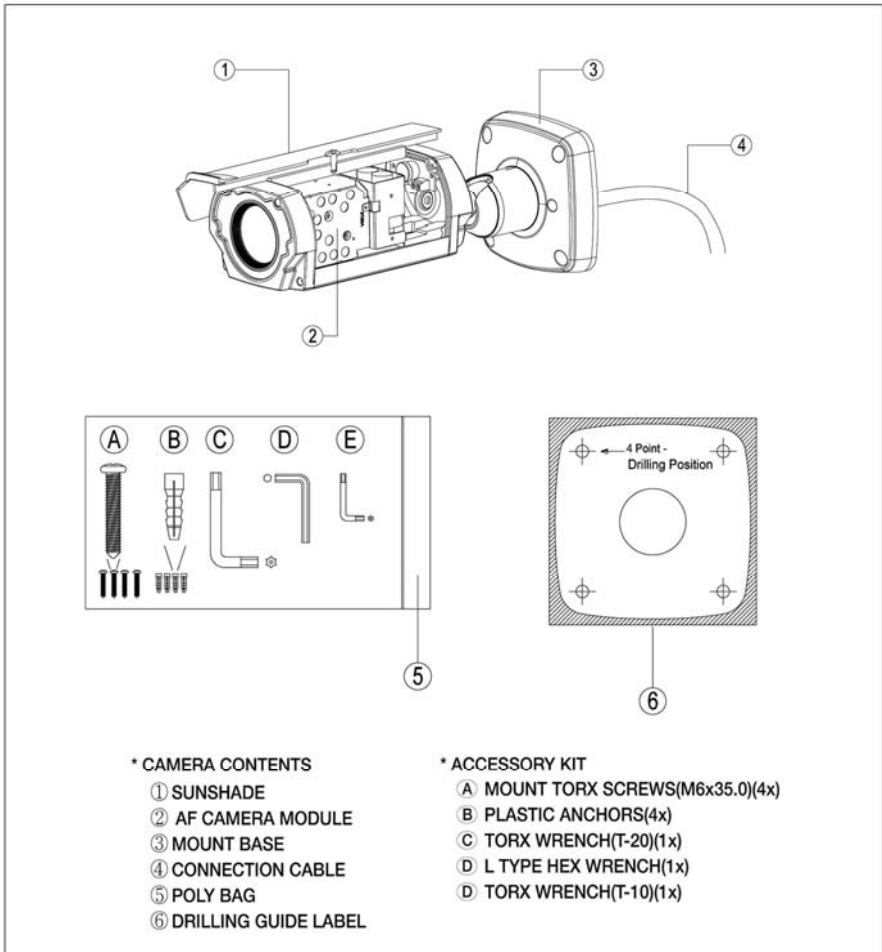
2. SYSTEM INSTALLATION

Installation of the camera must be performed by qualified service personnel in accordance with all local national electrical and mechanical codes must perform installation of the camera.

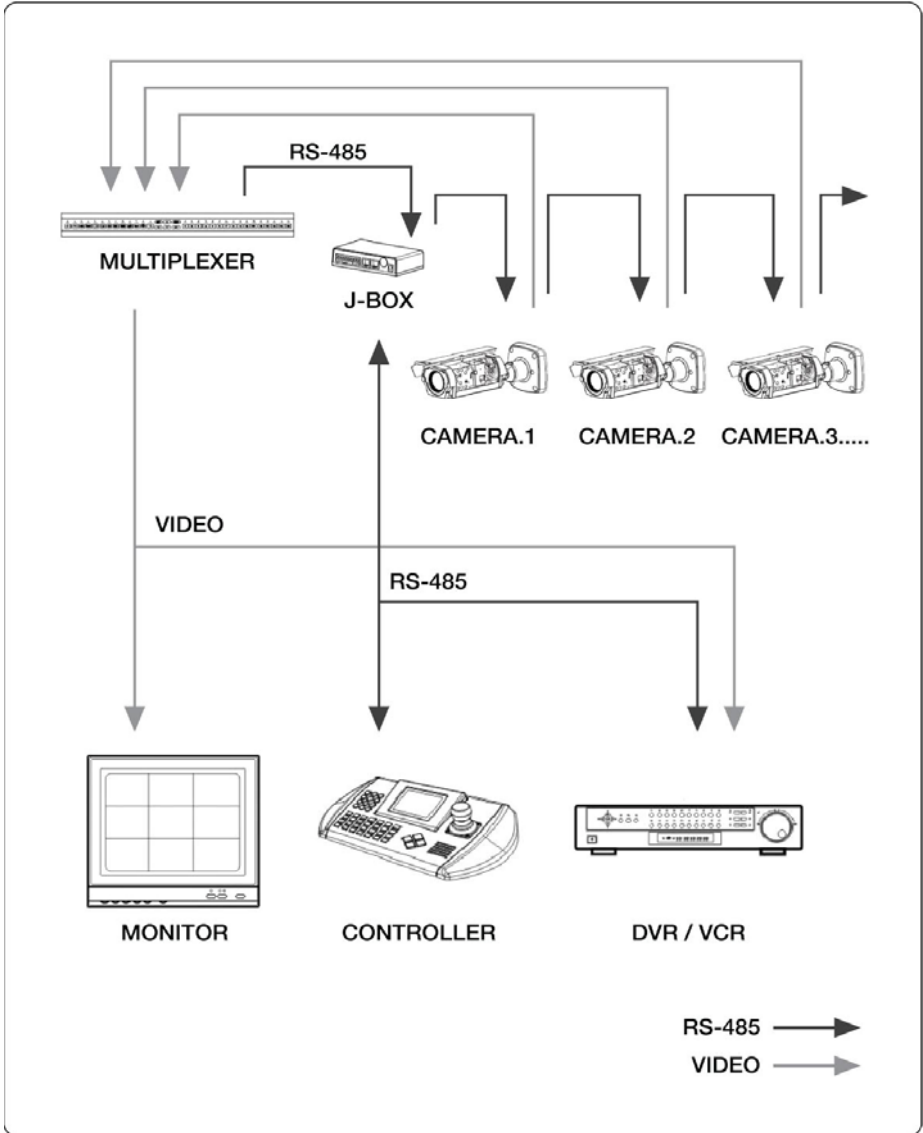
Perform the following steps to install the camera.

2.1 PACKAGE CONTENTS

- Camera - 1EA
- Instruction Manual (This document) - 1EA
- Accessory kit – 1EA

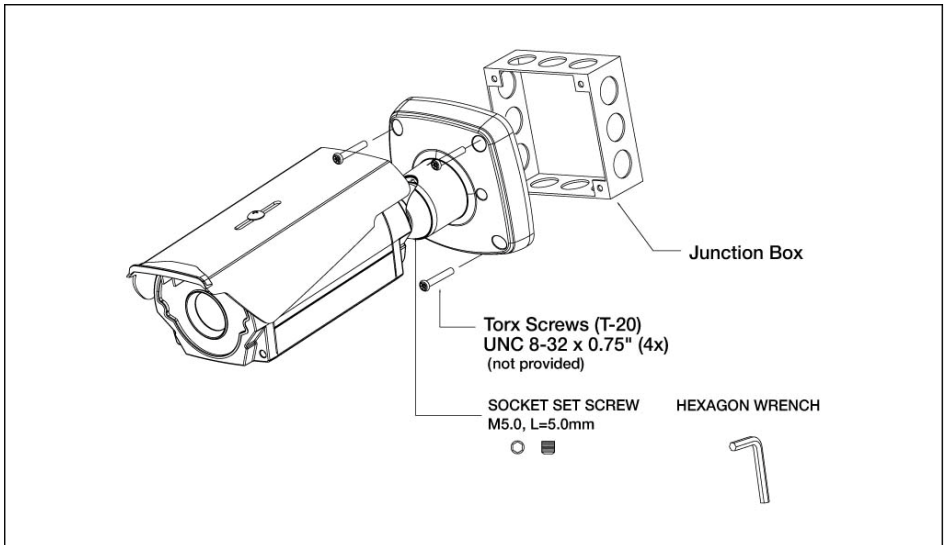
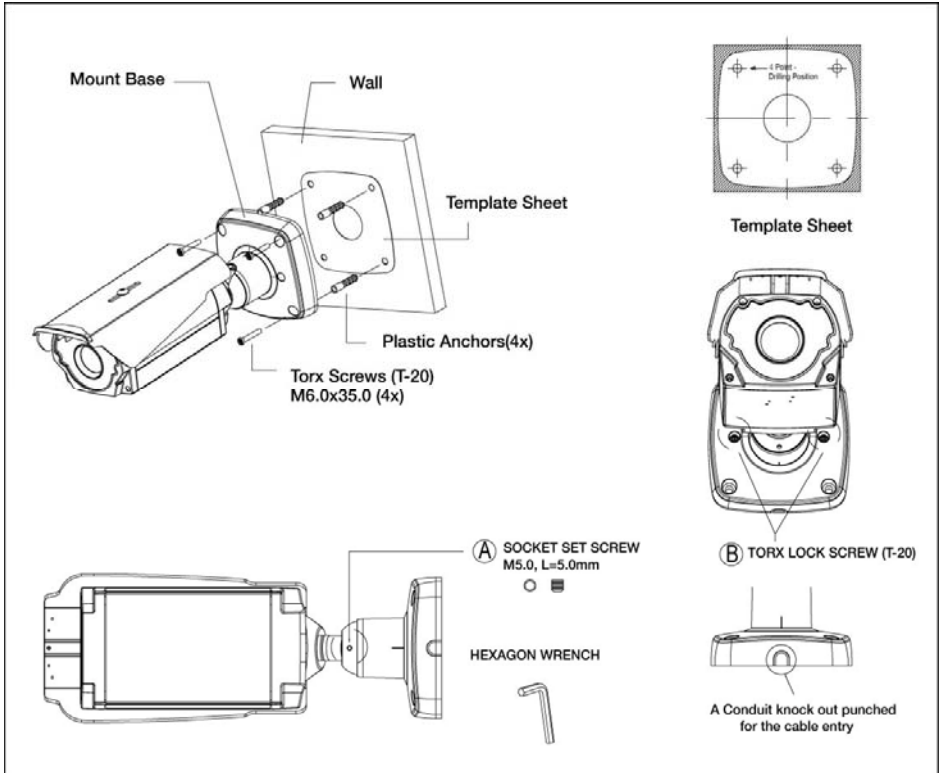


2.2 OPERATION REQUIREMENTS



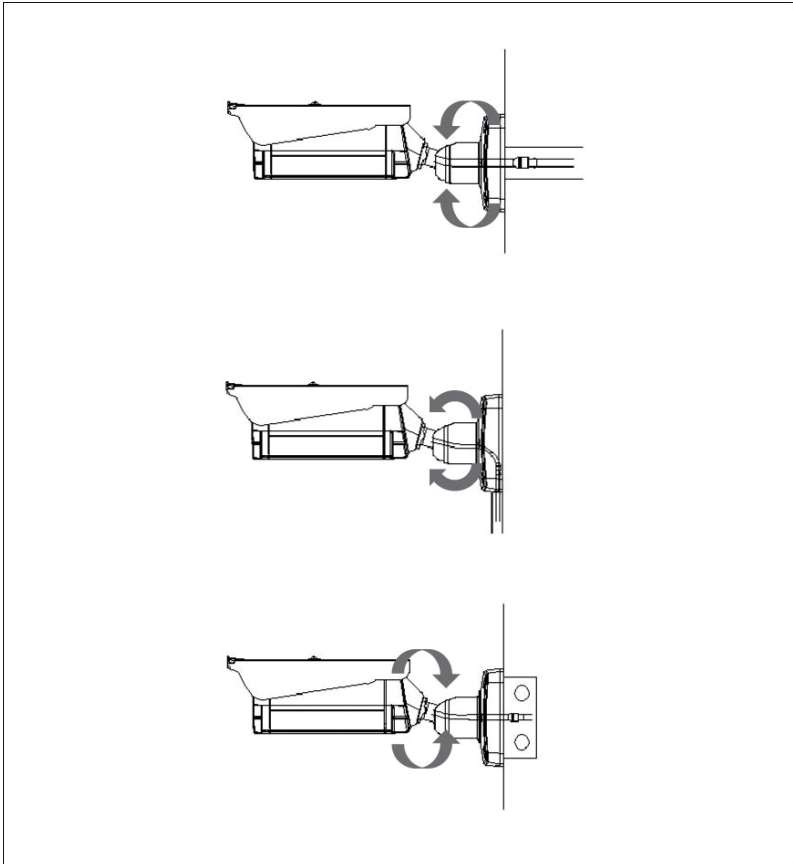
<Typical System Conifguration>

2.3 BASE INSTALLATION



2.4 Adjusting the 3-Axis Bracket

Loosen the corresponding screws before attempting to make Pan, Tilt and Rotation adjustments.



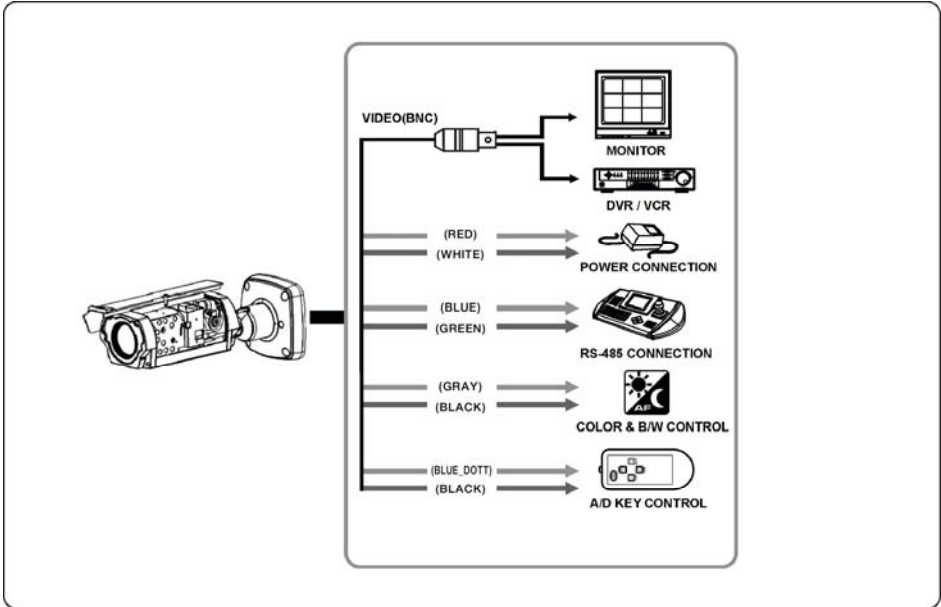
2.5 HEATER (Operating temperature)

- HEATER (Operating temperature)

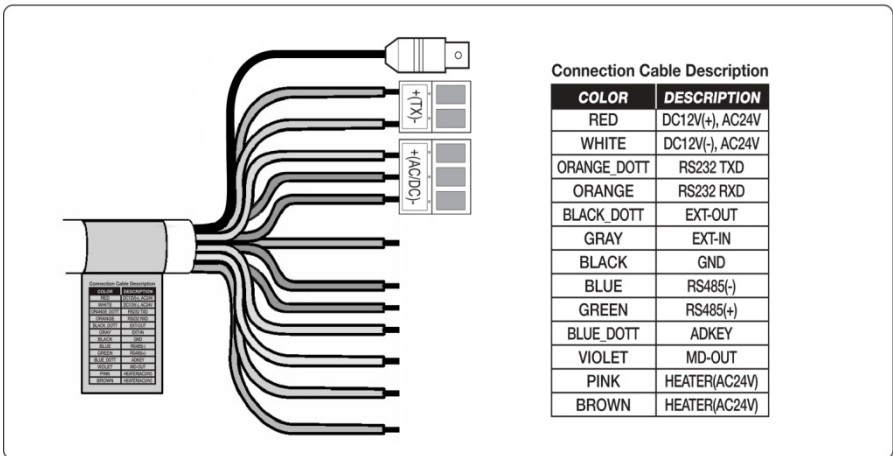
Power Supply	24VAC
Power Consumption	20W
Heater ON	at 25°C (±5°C)
Heater OFF	at 35°C (±5°C)

3. CONNECTION

CAUTION : Do not connect the power cable until all other connections have been completed. If you complete the whole connection of cameras, then you have to cut the extra cable.

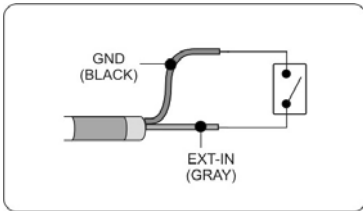


3.1 COLOR LEAD WIRE & COLOR DISPLAY LABEL



3.2 EXTERNAL INPUT

It connects to an external sensor.

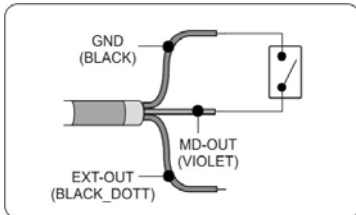


ALARM/MD -> EXT

- EXT-IN - OPEN : COLOR / ALARM OFF
- CLOSED : B/W / ALARM ON

3.3 EXTERNAL OUTPUT

The EXT-OUT lead and MD-OUT lead output voltage is different according to D/N and MD settings. Please refer to below in detail.



1. EXT-OUT output voltage

The EXT-OUT lead output voltage for COLOR and B/W is as following.

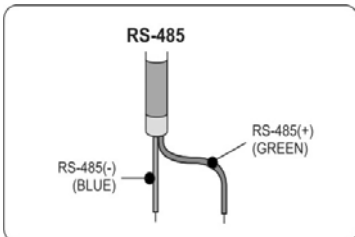
- EXT-OUT - COLOR : 0V
- B/W : 5V

2. MD-OUT output voltage

The MD-OUT lead output voltage is as following in case MD event occurs when 'ALARM/MD MENU' -> 'MODE' is set to MD, MD+EXT

- MD-OUT - MD OFF : 0V
- MD ON : 3.3V

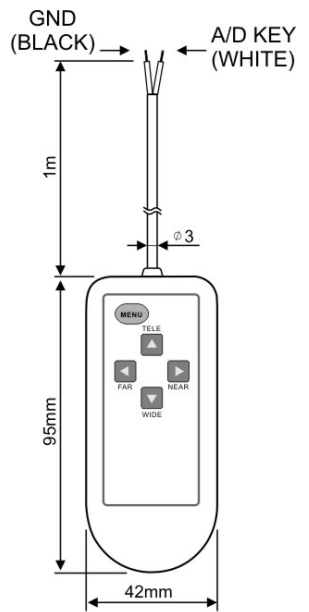
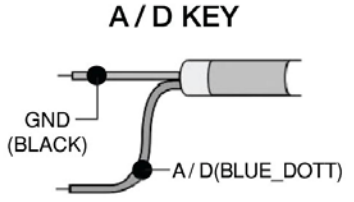
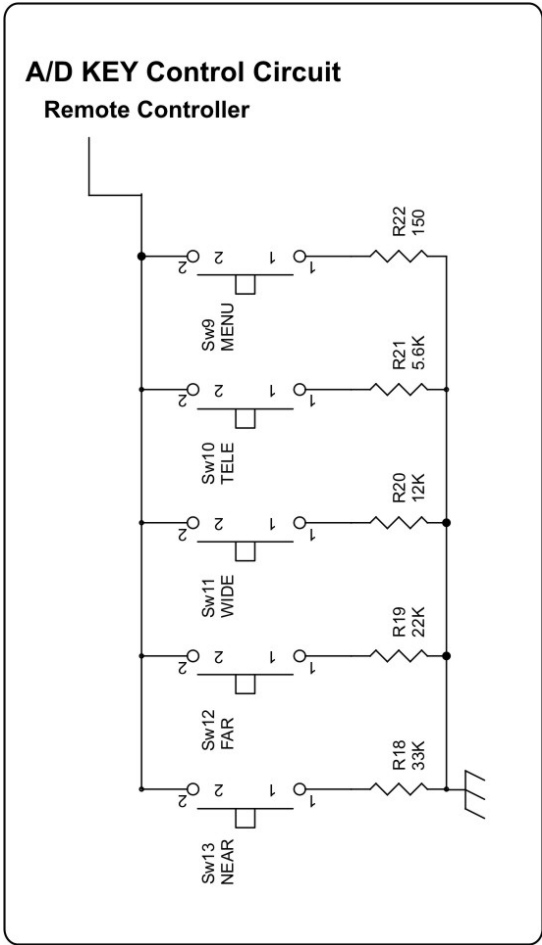
3.4 RS-485 CONNECTION



Connecting to the RS-485 : The Camera can be controlled remotely by an external device or control system, such as a control keyboard, using RS-485 half-duplex. Connect Market Rx+, Rx- to Tx+ and Tx- of the RS-485 control system.

3.5 EXTERNAL A/D KEY CONTROL

External Controller Circuit Schematic

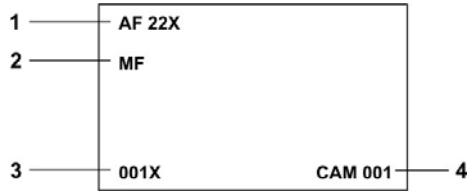


Remote Controller

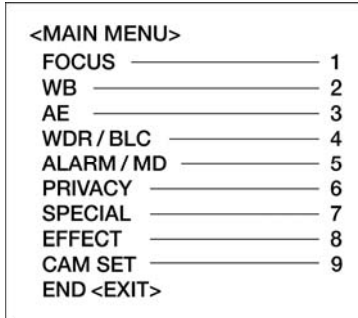
4. CAMERA ADJUSTMENT

4.1 OSD MAIN SCREEN

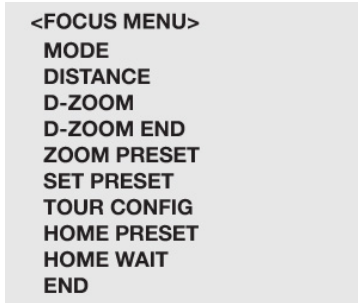
1. Camera title
2. Status of the focus mode
3. Status of the zoom position
4. Camera ID



4.2 MAIN MENU



4.2.1 FOCUS



- MODE** Select auto, manual, push auto mode.
- DISTANCE** Select minimum distance in focus between camera and object. (0.1/1.0/1.5/2.5/6m)
- D-ZOOM** Digital Zoom on/off.
- D-ZOOM END** Select maximum Digital Zoom magnification. (x2, x3, x4, x6, x8, x12, x16)
- ZOOM PRESET** Select zoom preset number, Default is x1. (1~10)
- SET PRESET** Set the zoom position of zoom preset.
- TOUR CONFIG** Select zoom tour mode. (10 zoom preset to 1 tour mode)
- HOME PRESET** To move the zoom position to the selected preset number when idle state(Decisions by HOME WAIT time).
- HOME WAIT** Select the duration time to activate the HOME PRESET.

NOTE 1 : When "ZOOM PRESET" is selected, you can adjust the preset zoom location using the "tele" and "wide" buttons.

NOTE 2 : When after the zoom location has been selected press the "menu" button to store the location.

4.2.2 WB (White Balance)

```
<WB MENU>
MODE
R GAIN
B GAIN
FEAME ADJ
END
```

- MODE** Select white balance mode.
(AWB/WAWB/INDOOR/OUTDOOR/MANUAL/CRS)
- AWB Auto white balance mode. (2500~9500°K)
- WAWB Wide range auto white balance mode. (1800~10500°K)
- INDOOR Indoor white balance mode.
- OUTDOOR Outdoor white balance mode.
- MANUAL Manual mode. You can change R and B Gain manually.
- CRS Color rolling suppression mode.
- R GAIN** Adjust R gain value. (0~255)
- B GAIN** Adjust B gain value. (0~255)
- FRAME ADJ** Since the color rolling path differs depending on the fluorescent lamp used, adjust the color rolling frame for each fluorescent lamp. So press Menu key to adjust frame and after about 10 seconds, the adjust mode will be finished automatically and 'ENT' turns to 'END'.

4.2.3 AE (Auto Exposure)

```
<AE MENU>
MODE
SHUTTER
GAIN
DSS
MAX DSS
FLICKERLESS
BRIGHTNESS
IRIS SPEED
END
```

- MODE** Select Exposure mode. (AUTO1/AUTO2/SHUT PRI/MANUAL)
- AUTO1 Auto exposure mode 1. (Use to normal surroundings : indoor)

-AUTO2	Auto exposure mode 2. (Use to high brightness surroundings : outdoor)
-SHUT PRI	Shutter priority exposure mode.
-MANUAL	Manual exposure mode.
SHUTTER	Select shutter speed. (1/60(50)~1/100K) Can be changed while in SHUT PRI and Manual mode.
GAIN	Gain control. (0~30DB)
DSS	Digital slow shutter on/off
MAX DSS	Select maximum slow shutter value. (x2~x512)
FLICKERLESS	Flickerless on/off
BRIGHTNESS	Adjust brightness level. (0~50)
IRIS SPEED	Sets the convergence speed of the mechanical iris (0~20)

4.2.4 BLC/WDR

```

<WDR / BLC MENU>
WDR      MODE
          LEVEL
BLC      MODE
          AREA
          LEVEL
END

```

WDR	MODE	Wide dynamic range on/off.
	LEVEL	Adjust WDR level. (LOW/MIDLOW/MID/MIDHIGH/HIGH)
BLC	MODE	Select backlight compensation mode. (OFF/HLC/BLC/BLC-M)
	AREA	Select BLC-M area position. (1~9)
	LEVEL	Select BLC level. (LOW/MID/HIGH)

4.2.5 ALARM/MD

```

<ALARM / MD / MENU>
MODE
AREA SEL

---
DEFAULT
ADJ TOP / LEFT
ADJ BOT / RIGHT
SENSITIVITY
DWELL TIME
ALARM MODE
PRESET SEL
END

```


MODE	Select alarm and MD/EXT mode. (OFF/MD/EXT/ MD+EXT)
AREA SEL	Select MD area number. (1~4) Select MD enable/disable.
DEFAULT	Set MD area as default.
ADJ TOP/LEFT	Adjust the location of the MD area with boundary top and left.
ADJ BOT/RIGHT	Adjust the location of the MD area with boundary bottom and right.
SENSITIVITY	Adjust sensitivity of MD area. (MD:1~10)
DWELL TIME	Dwell time setup of zoom preset. (10,20,...,180sec)
ALARM MODE	One of two options can be selected for EXT mode. BW/PRESET.
PRESET SEL	Select zoom preset number. (OFF,1~10) (When the MD and/or Alarm is/are occurred.)

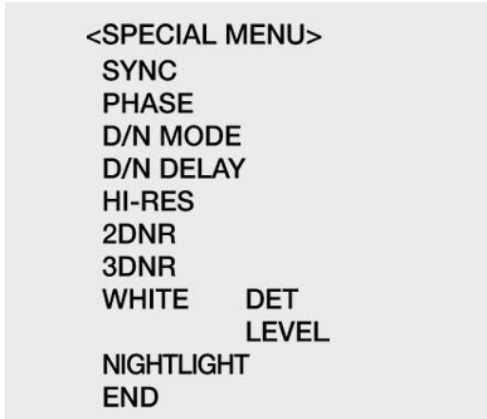
4.2.6 PRIVACY



MASK SEL	Select mask area number. (1~16) Select mask enable/disable.
DEFAULT	Set mask area as default.
ADJ TOP/LEFT	Adjust the location of the mask area with boundary top and left.
ADJ BOT/RIGHT	Adjust the location of the mask area with boundary bottom and right.
COLOR	Select mask color. (1~8)
MOSAIC	Mosaic display on/off.
MOSAIC TYPE	Mosaic roughness setting. (1 ~ 4)

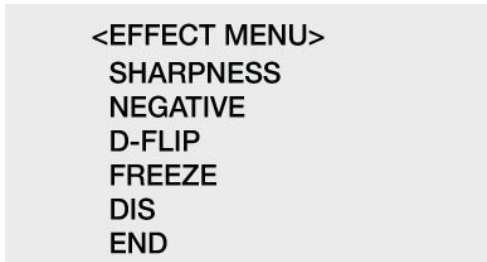
NOTE1 : The mosaic when the color is transparent, is possible

4.2.7 SPECIAL



- SYNC** Select internal or line lock mode. (DC power is internal sync only)
- PHASE** Adjust sync phase in line lock mode.
- D/N MODE** Select D/N, Color, BW.
- D/N DELAY** Adjust the working time of the filter when D/N operated.
(5,10,20 sec)
- HI-RES** Select high resolution mode. (LOW/MID/HIGH)
- 2DNR** Select 2D noise reduction level. (OFF/01~07)
- 3DNR** Select 3D noise reduction level. (AUTO/01~28)
AUTO : If the motion is detected, DNR level becomes lower automatically so "ghost" is decreased, on the other hand, noise will be increased. On the opposite, if there is no motion, DNR level is raised and noise will be decreased
- WHITE DET** Press the Menu key to execute the White Pixel Detection function and then the Iris will be closed automatically. When detection is completed, the operation automatically returns to the normal state.
- LEVEL** Adjust the threshold level from 1 to 15. (Default is 4)
- NIGHTLIGHT** Select IR options. IR/NEAR, IR/ALL.

4.2.8 EFFECT



- SHARPNESS** Adjust sharpness of outline. (0~15)

NEGATIVE

Select the negative or positive mode.

D-FLIP

Select rotate or flip mode. (OFF/H FLIP/V FLIP/ROTATE)

FREEZE

Select the real or still mode.

DIS

Select On or Off the DIS mode. (Digital Image Stabilizer)

4.2.9 CAM SET



CAM ID

Select the camera ID. (1~255)

BAUD RATE

Select serial communication speed. (2400/4800/9600/19200bps)

PROTOCOL

Select operating protocol.

(FASTRAX/PELCO-P/PELCO-D/COMMAND)

DISP MODE

Select display mode. (ON /PUSH ON/OFF)

DISP ITEM

Select display item. (1~2)

1

Camera Title and ID display.

2

Camera Title and ID, Zoom lens position display.

TITLE

Select camera title menu. (A~Z, 0~9)



ALARM TEXT

If the alarm is occurred, the ALARM TEXT established at this menu will be displayed.

SAVE

Save preset parameters of CAM SET MENU.

NOTE 1 : You can choose BPS menu appropriate for keyboard protocol.

NOTE 2 : Although you change BAUD RATE or PROTOCOL menu, the terms of change is not applied unless you select SAVE menu.

NOTE 3 : Do not power source down while saving

5. TROUBLESHOOTING AND MAINTENANCE

5.1 TROUBLESHOOTING

If problems occur, verify the installation of the camera with the instruction in this manual and with other operating equipment.

Isolate the problem to the specific piece of equipment in the system and refer to the equipment manual for further information.

PROBLEM	POSSIBLE SOLUTION
Nothing appears on the screen	Are the power cord and line connection between the camera and monitor made properly?
The image on the screen is dim.	Is the lens dirty? If so, clean the lens with a soft, clean cloth.
The camera is not working properly and the surface of the camera case is hot.	Is the camera connected to the proper power?
The contrast on the screen is too weak.	Adjust the contrast feature of the monitor. Is the camera exposed to strong light? If so, change the camera position.

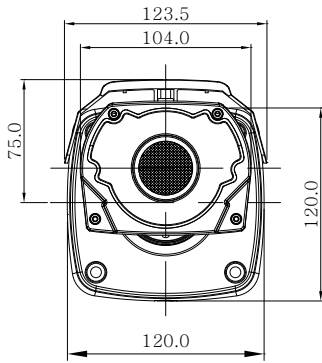
5.2 MAINTENANCE

Preventive maintenance allows detection and correction of minor faults before they become serious and cause equipment failure.

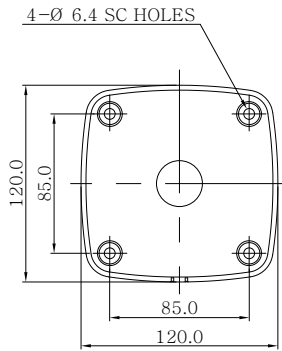
Every three-month, perform the following maintenance.

- A. Inspect all connection cables for deterioration or other damage.
- B. Clean components with a clean damp cloth.
- C. Verify that all the mounting hardware is secure.

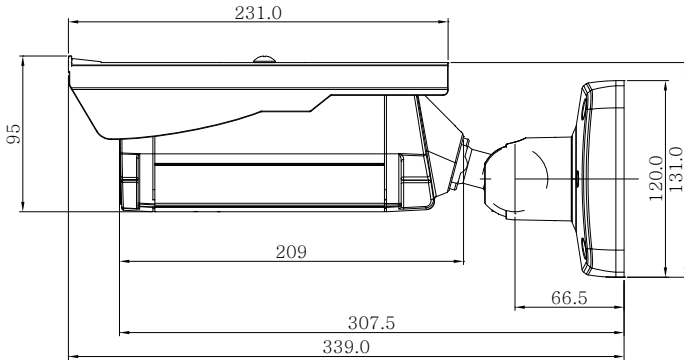
6. DIMENSIONS



<FRONT VIEW>



<REAR VIEW>



<SIDE VIEW>

7. SPECIFICATIONS

MODEL		NTSC	PAL	
POWER	Power Source	DC 12V / AC24V ±10%		
	Power Consumption	24W(Fan + Heater ON)		
GENERAL FUNCTION	Image Sensor	1/4" 960H Super HAD CCD II		
	Total Pixels	1028(H) * 508(V)	1028(H) * 596(V)	
	Scanning System	2:1 interlace		
	Scanning Frequency	15.734KHz(H), 59.94Hz(V)	15.625KHz(H), 50Hz(V)	
	Sync. System	Internal / External(Line lock)		
	Resolution	700 TV lines		
	Min. illumination	0. lux (Color), 0.01 lux (B/W), 0.00 lux (IR LED ON)		
	Video Output	1.0 Vp-p (75 ohm, composite)		
	S/N Ratio	50dB (AGC OFF)		
		WDR (Wide Dynamic Range)	Off / On	
		BLC (Back Light Compensation)	Off / HLC / BLC / BLC-M(BLC Manual)	
		Day & Night	Auto / Color / BW	
		IR LED	70EA (850nm)	
		NIGHTLIGHT (IRLED On / Off)	Off / NEAR / ALL	
		IR Distance	80m *Minimum distance between the subject and camera : 50cm	
		ALARM / MD (Motion Detection)	Off / MD / EXT / MD+EXT	
		DIS(Digital Image stabilizer)	On/Off	
		DSS (Digital Slow Shutter)	x2 ~ x512	
		DNR (Digital Noise Reduction)	2D / 3D	
		PM (Privacy Masking)	1 ~ 16 zone	
		AWB (Auto White Balance)	AWB / WAWB / Indoor / Outdoor / Manual / CRS	
		AE (Auto Exposure)	Auto1 / Auto2 / Shutter PRI / Manual	
		Iris Control	Auto	
		AGC (Auto Gain Control)	MIN / LOW / MID / HIGH (30dB max.)	
		Shutter Speed	Normal ~ 1/100,000	
		Title	A ~ Z / 0 ~ 9	
		Display	On / PushOn / Off	
		Brightness	10 ~ 50 steps	
		Sharpness	0 ~ 15 steps	
		Zoom Preset	Preset 1 ~ 10	
		Zoom Tour	Tour 1	
		Camera Control	RS-232 / RS-485(FASTRAX / Pelco P, D / COMMAND) / ADKey	
	BPS	2400 / 4800 / 9600 / 19200		
	Camera ID	001 ~ 255		
	D-FLIP	Off / V- FLIP / H- FLIP / ROTATE		

G E N E R A L		Effect	Sharpness, Nega/Posi, D-FLIP, Freeze, DIS HI-RES, 2-3DNR, NIGHTLIGHT
		Home Preset	Off / Home Preset Select / Dwell Time
	L E N S	Focus Mode	Auto / Manual / Push AF
		Distance	0.1M / 1.0M / 1.5M / 2.5M / 6.0M
		Zoom Ratio	Optical x22, Digital x16 Zoom (Video AF)
		Focus Length	f = 3.9 mm ~ 85.8 mm
		Aperture Ratio	F1.6 (wide) ~ F3.7 (tele)
		Angle of View	Horizontal : 49.5 degree (wide) / 2.4 degree (tele)
C O N N E C T O R & E T C.	Power Input	3-pin terminal block	
	Video Output	BNC connector	
	Operating Temperature	-30℃ ~ +50℃ (built in Heater & Fan)	
	Operating Humidity	0 ~ 96% (non-condensing)	
	Storage Temperature	-20℃ ~ +60℃	
	External Dimension	120(W) x131(H) x 339(D) mm	
	Weight	1850 g	

**HIGH RESOLUTION 22x AF Zoom
WDR Day & Night Camera**

PRINTED IN KOREA

50303121A