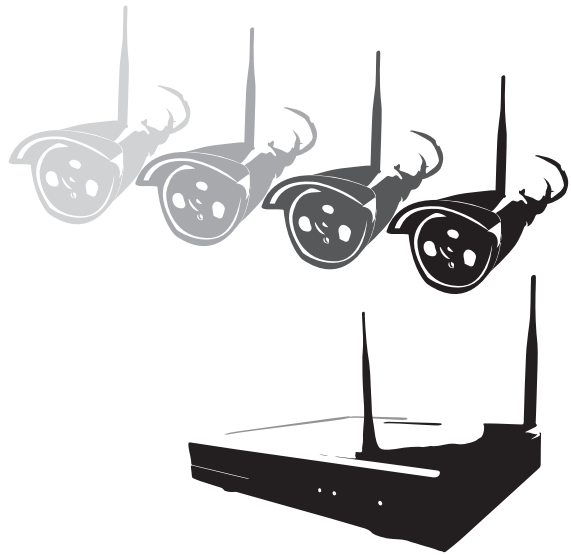


# Wireless kit Quick installation guide



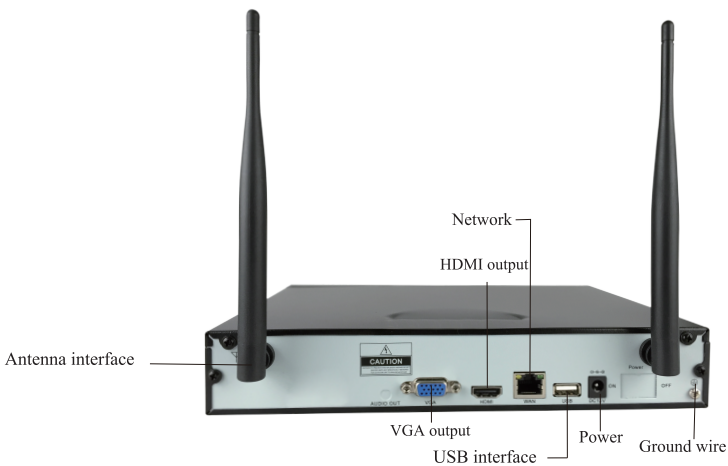
For Support:Phone: (866) 625-7386

E-Mail: support@revoamerica.com

Model: RW41B4G

Wireless NVR kit Quick installation guide

## 6. Description of Rear Panel



The ground wire connection is not needed for operation, but may be required by regulation for certain professional installations.

## 7. Power On/Off

Ensure the power switch on the NVR is in the off, “O” position. Plug the included power adapter into a wall outlet and connect the power adapter’s 12VDC output to the NVR. Press the power switch on the NVR to the on, “-” position and the NVR’s power light will illuminate.

Wireless NVR kit Quick installation guide

## ► Hardware Description

### 1. Introduction

- Thanks for purchasing this REVO product. Please contact us with any of your questions regarding its operation.
- This user manual may contain incorrect information and/or typographical errors, and may be updated without notice.

### 2. Safety Precautions

- Do not put any liquid-containing vessel, such as a vase, on the NVR.
- The NVR should be put in a well-ventilated place, with the NVR’s cooling slots unblocked.
- Only use the included power adapters with this product.
- The NVR should be placed horizontally, on a vibration-free surface.
- Moistened dust on the NVR’s PCB can create a short circuit. Please place the NVR in a non-humid environment to ensure long-term performance.
- If the battery must be replaced, use only an identical or equivalent replacement. Install the replacement battery with respect to the correct polarity.
- The installation of this NVR must comply with the national and local standards.

### 3. Package Inspection

Upon unpacking your wireless NVR kit, please confirm that all items are present. A packing list is included at the end of this document. Please contact REVO to report any missing or damaged items.

01

Wireless NVR kit Quick installation guide

## ► Operation

<b>Default User Name:</b>	admin
<b>Default Password:</b>	(none)
<b>NVR Default IP Address:</b>	192.168.1.114
<b>Camera Default IP Address (Wired):</b>	192.168.1.168
<b>Camera IP Addresses (WiFi):</b>	17.20.14.X (X will differ for each camera.)

(NOTE: The NVR and cameras are set for DHCP operation by default, and will obtain an IP address from a DHCP-enabled router.)

### 1. Adding Cameras

**NOTE:** Whether wired or wireless operation is desired, these cameras must be powered using their included power adapters. These cameras are not capable of obtaining power from PoE (Power over Ethernet) sources. There are two ways for the NVR to add a Wireless IPC: “Match Code” and “Auto Add”.

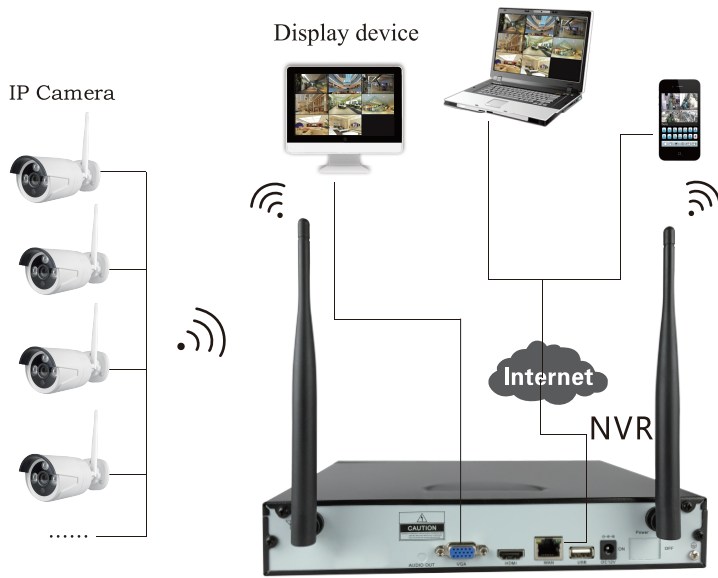
#### Method #1 (Add Cameras Wirelessly):

(NOTE: The cameras should connect wirelessly to the NVR right out of the box. If any camera becomes disconnected and will not reconnect wirelessly, use this method.)

- Using any standard Ethernet patch cable, connect the camera to the same network as the NVR.

Wireless NVR kit Quick installation guide

## 4. Installation Diagram



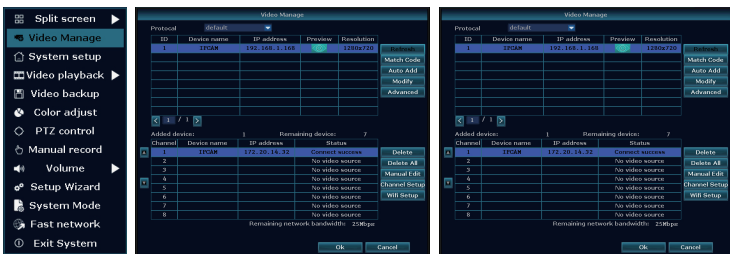
02

Wireless NVR kit Quick installation guide

- Apply power to the camera using its power adapter.
- Right-click the NVR’s screen, and click “Video Manage”.
- Wait a minute or so for the camera to boot, then click “Refresh”. The camera should appear in the list.
- Select the camera with a single left click to highlight it.
- Click “Match Code”, and then click “Yes” on the “Continue” window that appears.
- The matching process is now complete. The camera is now paired with the NVR and will automatically switch into WiFi mode. The camera’s LAN address will disappear and be replaced by an IP address in the NVR’s WiFi scheme. (17.20.14.X, where X will vary with each wirelessly connected camera.)
- You may now disconnect your camera from the network and power, mount the camera where desired, and re-apply power to it. It will now connect wirelessly to the NVR.

#### Method #2 (Add Cameras to the NVR’s Wired Network):

- Right-click the NVR’s screen, and click “Video Manage”
  - Click “Auto-Add”. This will automatically add cameras that are physically wired to the same network as the NVR.
- (NOTE: The cameras can not be powered using PoE [Power over Ethernet] sources.)



06

Wireless NVR kit Quick installation guide

## 5. Antenna Alignment



#### Correct Method

All antennas should point skyward, and be parallel with each other.

#### Incorrect Method

If the antennas point in different directions, the effective range may diminish greatly.

Ensure that the NVR’s antennas are pointed skyward, and that all camera antennas are also pointed skyward for best performance.

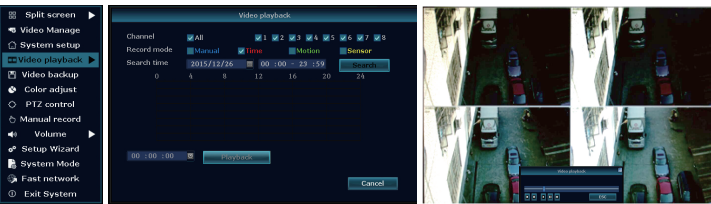
03

Wireless NVR kit Quick installation guide

## 2. Video Playback

**Step:** Right-click the mouse on the main screen. Navigate to Video playback → Manual Search → choose Channel NO. → choose Record Mode → Setup. Search the time, and choose the beginning time and end time. Click search, then click playback.

**Tips:** Playback icons: ⏮ playback previous frame, ⏭ playback next frame, ▶ play, ⏸ pause, ⏩ fast forward (x2,x4,x8)



## 3. Video Backup

**Step:** Right-click on the main interface → "Video Backup" → Select Backup "Channel" → Select "record mode" → Set "search time" → Click "search" → Select corresponding video → click "Video Backup ".

**Tips:** USB Flash drives up to 32G are supported. Video files are packaged as one hour.

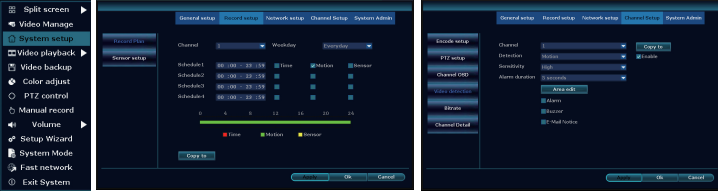


07

## 4. Video Detection

**Step 1:** Right click on the main interface → "System Setup" → "Record Setup" → "Record Plan" → Check "motion" → Select "All" → Click "Copy to" → Click "OK"

**Step 2:** Select “Channel Setup”→"Video detection" → Select "Sensitivity " (as desired) → change detection type to "Motion" → check "Buzzer, Alarm, E-mail" etc. as needed→ Click "Copy to" → click " OK"



## 5. Obtain ID

(Log into the NVR using a computer on the same network.)

To obtain an ID, we need to ensure that the device has been successfully connected to a network router that is connected to the Internet.

Right click mouse in main menu →System setup→Network setup

**DHCP Configuration:** Select "Auto Configuration", enter the "Auto Configuration" interface, check "Automatically Obtain IP" .Your NVR will receive an IP address from your DHCP-enabled router. The NVR will then get an ID.

**Note:** If automatic DHCP operation is not desired, the NVR can be manually set to use a static IP address.

**Manual Configuration:** Select "Manual Configuration" to set a static IP address to your NVR. Manually fill in the IP address (it must be in the same network segment as your router’s LAN IP address), Gateway address (Router IP address) and the preferred DNS address (the server address of the desired DNS service. If no special DNS server is needed, set this to 8.8.4.4 or 8.8.8.8), Web-Page port (80 default, it can be modified as needed. It is generally recommended to use port numbers above 1024 if doing port mapping).

### Cascading Function Setup:

Cascading function can be used to repeat a camera’s Wi-Fi to another camera signal and offer a wider range.

**Note:** This function can’t strengthen Wi-Fi signal, it just extends the distance when cameras are installed at the right place.

## 1. Setup procedure

1. On the NVR, right click on the main screen, left click on “Video Manage” → then left click on “Repeater”.
2. As picture shown below, click the + icon beside channel 1 and choose the camera to be repeated. This means that channel 1 camera is the repeater between NVR and the other channel. Then click “Apply” and “OK”.



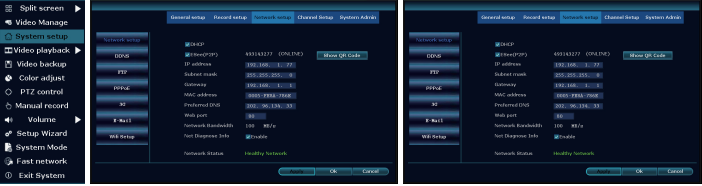
## 2. Removing the repeater function

On the “Repeater” page, left click on the repeated channel to remove it from the other camera, and then click “Apply” and “OK”.

**Note:** To remove a repeated channel the camera must be on and communicating with the NVR, otherwise the NVR will be unable to apply the changes to the repeated camera.



**Note:** If the NVR can still not connect to your network, please click “Diagnosis”. A diagnostic message will be displayed. Contact REVO for assistance.



## 6 Access within LAN – (Local Connection)

**Step 1:** Right click on the main screen → "System Setup" → "Network Setup" → Check and write down the current network IP address.

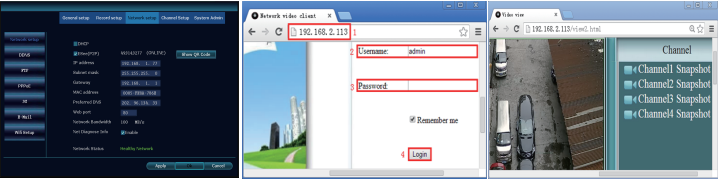
**Step 2:** To access the NVR using a computer on the same local network, input the NVR’s IP address and port into Internet Explorer or other browser (If the NVR’s web port is 80, it does not need to be included in the browser’s address bar. For example, if your NVR’s IP address is 192.168.10.108, enter http://192.168.10.108 at the address bar; if the web port is modified to port 1111, you will need to enter http://192.168.10.108:1111.) This will access the LAN “log in” web page. Input the user name (default = admin) and password (default = <no password>), and click “Log In”.

**Step 3:** Once successfully logged in, users can view video and monitor the NVR.

**Tips:** Please make sure the NVR and the computer are in the same network segment.

## 11. NVR, Wireless IPC Specifications

NVR Specifications		
Operating System	Embedded Linux OS	
AV(audio/video)input	Network Video	4CH
	Network Video input broadband	20Mbps
AV(audio/video) output	HDMI input	1ch, Resolution: 1024x768, 1336x768, 1440x900,1920x1080P
	VGA output	1ch, Resolution: 1024x768, 1336x768, 1440x900,1920x1080P
Decode	Video Resolution	720P/960P/1080P
	Synch-playback	4CH
Video Control	Video/Capture mode	Manual、Time、Motion、Alarm
	Playback mode	Real time、Routine、Event
	Backup	USB backup
HDD	Type	1*SATA interface
	Max Capacity	4 TB (maximum)
External Interface	Network Interface	1 Adaptable RJ45 10M/100M, 2 WIFI Interfaces/Antennas
	USB Interface	2 USB 2.0
Network Control	Protocol	UPnP (Plug & Play)/SMTP (E-mail service) /PPPoE (Dial-Up)/DHCP (Automatically Obtain an IP address from Router), etc...
Misc	Power	DC 12V 2A
	Consumption (excluding HDD)	≥5W
	Working Temperature	-10℃ to +55℃ (14 F to 131 F)
	Working Humidity	10% to 90%, Non-Condensing
	Size	257 x 210 x 45mm
	Weight (Excluding HDD)	≤1Kg



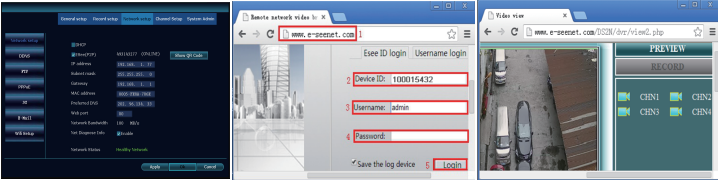
## 7. Access via Internet – (Remote Connection)

**Step 1:** Right click on the main screen and click →“System setup” →“Network setup” → check the NVR’s P2P ID and write it down.

**Step 2:** To access the NVR from anywhere on the Internet, navigate Internet Explorer to www.revowireless.com. Access the web page, input your ID, User Name and Password, and log in.

**Step 3:** Once accessed successfully, users can remotely check video.

**Tip:** The connection success and quality of the remote video is strongly related to NVR’s upload bandwidth and the download bandwidth of remote viewing device.



## 8. Android Mobile App (REVO Wireless)

### Download and Installation

Search for and install the “REVO Wireless” app on the Google Play store using an Android device.

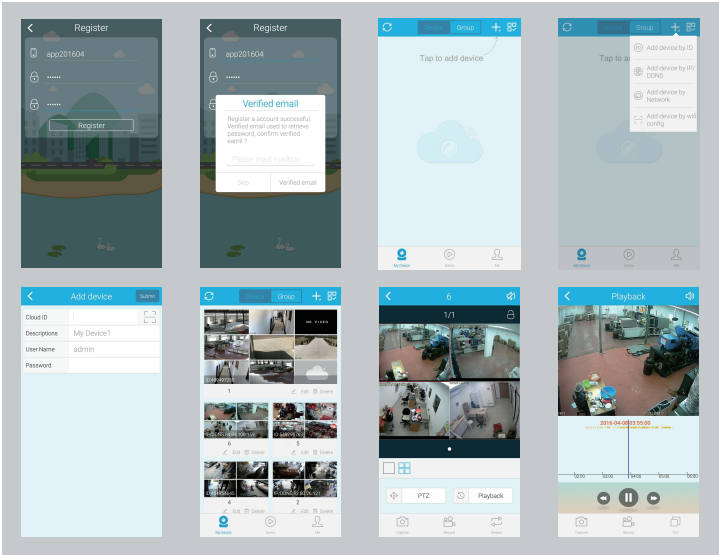
IPC Specification (2MP Wireless Cameras)	
Operating System	Embedded Linux
Image Sensor	1/4” Progressive Scan Sensor
S/N Ratio	>39.1dB
Resolution	1920x1080
Minimum Illumination	Color: 0.1 Lux B/W: 0.01 Lux
Lens	4mm
OSD	Date Time & Title
White Balance	Auto
Day & Night	Auto / Color / BW
3D-DNR	Auto
Mirror/Flip	On / Off
Privacy Masking	4 Zone Selectable
Frame Specification	Two Streaming at the same time: H.264 1920x1080@15fps H.264 640x360@15fps
ESD	Standard IEC6100-4-5
Power Input	DC12V 1A
Consumption	≤6W
Interface	RJ45/WIFI 802.11b/g/n
Working Temperature /Humidity	-10℃ to +50℃/30% to 80% RH
Storage Temperature /Humidity	-20℃ to +60℃/20% to 90% RH
Size	205(L)x70(W)X50(H)mm
Weight	500g

## 9. iPhone App (REVO Wireless) Download and Installation

**Step1:** Navigate to the Apple App store. | **Step2:** Search for “REVO Wireless”. | **Step3:** Input Apple ID password. | **Step4:** Click download

## 10. Mobile App (REVO Wireless) – How to Add a Device

**Step1:** Open REVO Wireless. | **Step2:** Enter Device register a user name and log in. | **Step3:** Add the NVR’s ID number and go back to the main menu. | **Step4:** Click the device to view live video. | **Step 5:** Remote playback can also be performed.



## Packing List

S/N	Item	Quantity
1	NVR	1pcs
2	Screw Bag (4 HDD Screws)	1pcs
3	USB Mouse	1pcs
4	1 Meter Network (for IPC Code Matching)	1pcs
5	12VDC, 2A Power Supply (for NVR)	1pcs
6	NVR User Manual, Installation Instructions	1pcs
7	RWCB40-1	4pcs
8	12VDC, 1A Power Supply (for Camera RWCB40-1)	4pcs
9	Screw Bag (for mounting Camera RWCB40-1)	4pcs