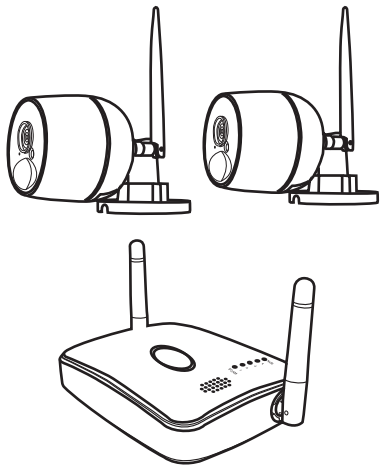


# REVO Gateway Wireless Kit

App: REVO Wireless

User manual

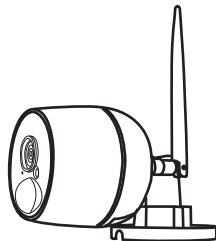


Before operating this unit, please read these instructions carefully, and save them for future use.

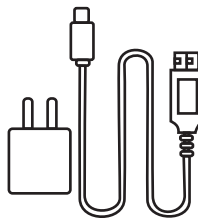
## Package includes

The Gateway and the Cameras are already paired together before shipping, so there is no need for pairing prior to use.

Open the packaging and verify its contents.



IPC Quantity Varies Per Kit



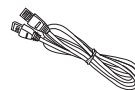
Power Varies Per Kit



Gateway x 1

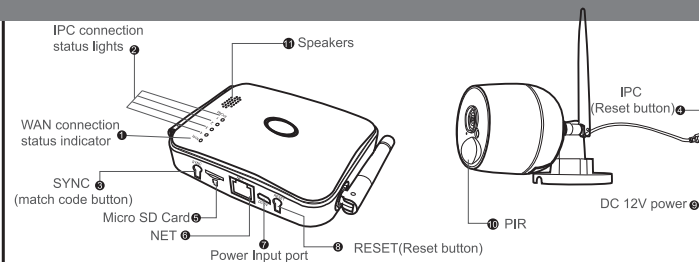


User manual x1



Network Cable x 1

## Product introduction



Description	Instructions
1 WAN connection status indicator:	On when WAN connection is normal. Slow flash when LAN or WAN are disconnected.
2 IPC connection status lights	When IPC is connected to the Gateway, the status is on when connection is normal. Slow flash when disconnected.
3 SYNC (Match Code Button)	Code key. Press and hold for 4 seconds to enter the matching code state. Voice prompt: "Start matching code, please wait for the voice prompts to complete". Enter the wireless matching code. Voice prompt: "Matching code Success" or "Matching code fails".
4 IPC (Matching Code Method)	Press the reset key for 5 seconds on IPC, After restoring factory settings, the IPC cable LED will flash. Quickly press the Gateway Sync key for 4 seconds. After waiting for the voice prompt "Matching code success", check that the gateway channel indicator is steady on. If the IPC cable LED indicator stays on, then matching code is successful. (Note: IPC and Gateway are already code matched before shipping, so there is no need to pair prior to use. If the user needs to replace or add new IPC, please follow the above instructions to pair the new IPC.)
5 MicroSD card slot	After inserting the microSD card, the system defaults to motion recording.
6 NET	Network cable interface for connection to a router.
7 DC 5V	Power interface.
8 RESET	Long press 10 seconds to reset.
9 DC 12V	Power interface.
10 PIR	PIR human body motion detector.
11 Speakers	Built-in speaker for voice and two-way audio.

## ● APP download

Search for and install the mobile app named “REVO Wireless” on either the Google Play store (Android) or the Apple App store (iOS).

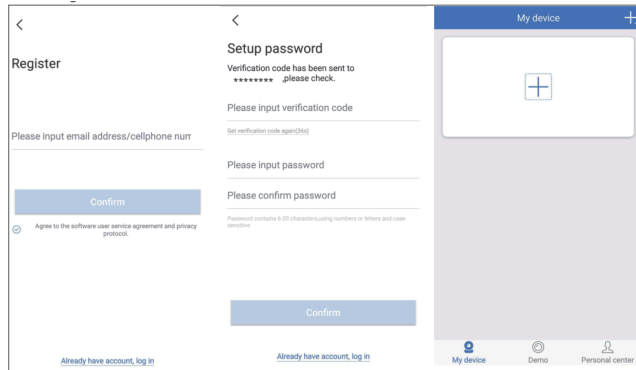


REVO Wireless

## ● User registration

Register.

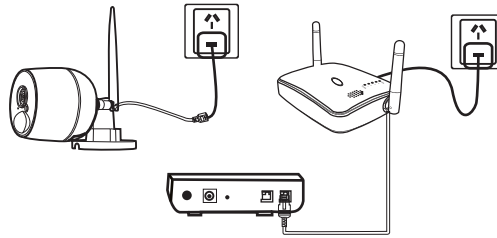
Use a valid email address. A verification code will be sent to it to enter in the verification code box. Enter the password you wish to use in the input password box and re-type it in the confirm box. Then tap the Confirm button.



3

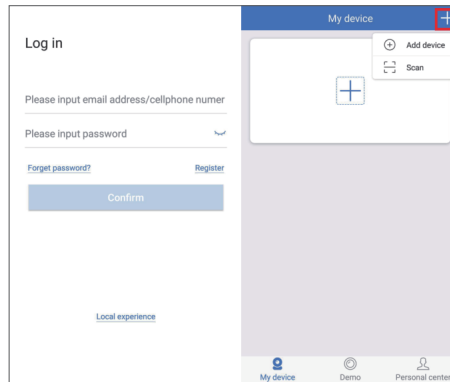
## ● Add Device

Step 1: Power the IPC and Gateway, and connect the Gateway to a home router by network cable.



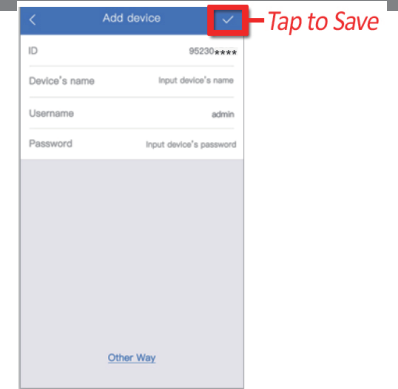
Step 2: Connect mobile phone to the same Wi-Fi router.

Step 3: Open REVO Wireless App, log in, tap the “+” in the upper right corner.

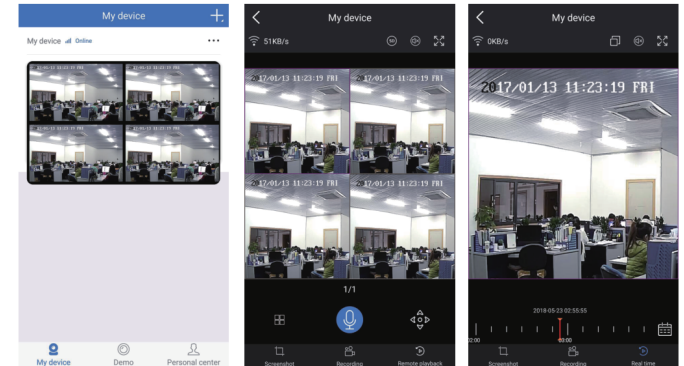


4

Step 4: Manually add the ID or scan the QR code on the Gateway and save to complete adding the device.



Step 5: Tap the device to begin watching video. From Live Stream, tap Remote Playback to view recorded video.



5