

1. Description

This manual applies to REHVD0309-1 network camera.

The network Camera provides a network service for a progressive-scan image sensor that can be monitored on a real-time screen regardless of distance or location. By using its dedicated program, many users are able to access the Network Camera at once, or a single user can monitor various network cameras at the same time. It also enables users to play, store and retrieve a monitored image by using a PC. All the settings and real-time monitoring screens are also provided through web access.

The Network Camera is fully featured for security surveillance and remote monitoring needs. It is based on a DSP compression chip, and makes it available on the network as real-time, full frame rate Motion JPEG and H.264 (or MPEG-4) video streams.

The alarm input and alarm output can be used to connect various third party devices, such as door sensors and alarm bells.

- **Installation Steps**

Follow these steps to install the network camera on your local network (LAN):

1. Check the package contents against the list below.
2. Connect the Network Camera. See page 3.
3. Set an IP address. See page 4.
4. Set the password. See page 6.

- **Package Component**

The system comes with the following components:



Network Camera unit



Installation CD



Installation Guide



Template Sheet



Accessory Kit

- **Contents in the installation CD**

1. The REHVD0309-1 User's Manual
2. The SmartManager User's Manual
3. The Revo Remote Pro HD User's Manual
4. The SmartManager Installation software
5. The Revo Remote Pro HD Installation software

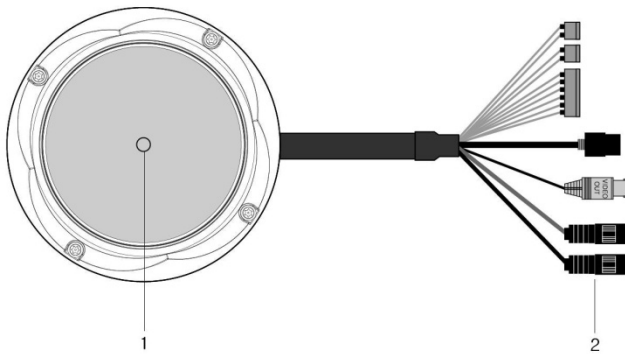
Note: Check your package to make sure that you received the complete system, including all components shown above.

2. Installation

For the operation of the Network Camera, it is necessary to connect a network cable for data transmission, power connection from supplied power adapter. Depending on operation methods, it is possible to connect an additional alarm cable. For its fixation on different locations, please consult with an installer.

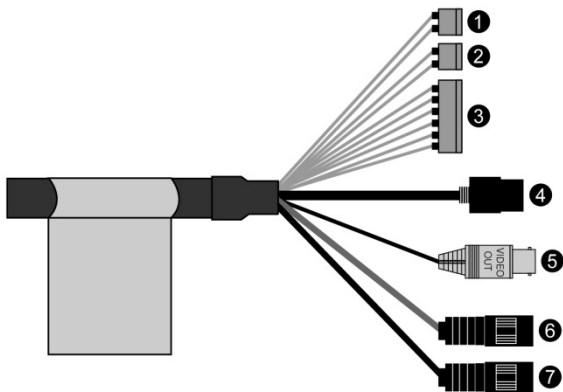
2.1 Over View

• Top View



NO	Name	Description
1	Lens	Allows wide area to be monitored
2	Extension Cable	26pin camera extension cable

• Extension Cable



NO	Wire Color	Description
1	Red: AC24V/DC12V White: AC24V/GND	Main Power, 2pin terminal, DC12V/AC24V, max. 4.0Watt
2	Green: AC24V/DC12V Black: AC24V/GND	Heater Power, 2pin terminal, max. 10Watt @ DC12V, max. 20Watt @ AC24V
3	Pink: Alarm In Yellowish Green: GND Yellow: AD Key Brown: GND Light Blue: Alarm Out Gray: GND	Alarm Input, AD Key Input, Alarm Output: 6pin terminal.
4	Black	Ethernet, RJ-45 port compatible with 10/100Mbps having PoE functionality. Modular Jack
5	Black	Video Composite Output, BNC Jack
6	Gray	Audio line output, Stereo Jack
7	Black	Audio line input, Stereo Jack

2.2 Connection

- **Connecting to the RJ-45**

Connect a standard RJ-45 cable to the network port of the network camera. Generally a cross-over cable is used to connect directly to a PC, while a standard cable is used to connect to a hub or router.

- **Connecting Alarms**

AI(Alarm In) :

You can use external devices to signal the network camera to react on events. Mechanical or electrical switches can be wired to the AI (Alarm In) and G (Ground) connectors.

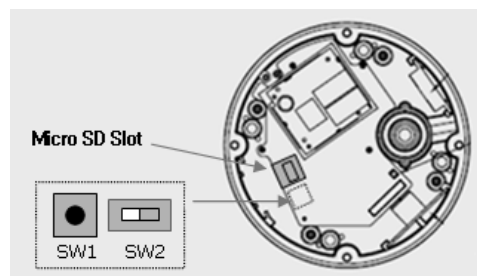
G(Ground) :

Connect the ground side of the alarm input and/or alarm output to the G (Ground) connector.

Alarm Out :

The network camera can activate external devices such as buzzers or lights. Connect the device to the AO (Alarm Out) and G (Ground) connectors.

- **Connecting Video Output**



Video Output(BNC) is used for an easy zoom and focus control when installing the lens. Set Video Switch (SW2 on the board) to On position to output the video signal. Video Output is restricted to VGA(640x480) resolution.

Caution: After lens installation, you must set the Video Switch to the Off position to provide the best performance of the Network Camera.

- **Connecting the Power**

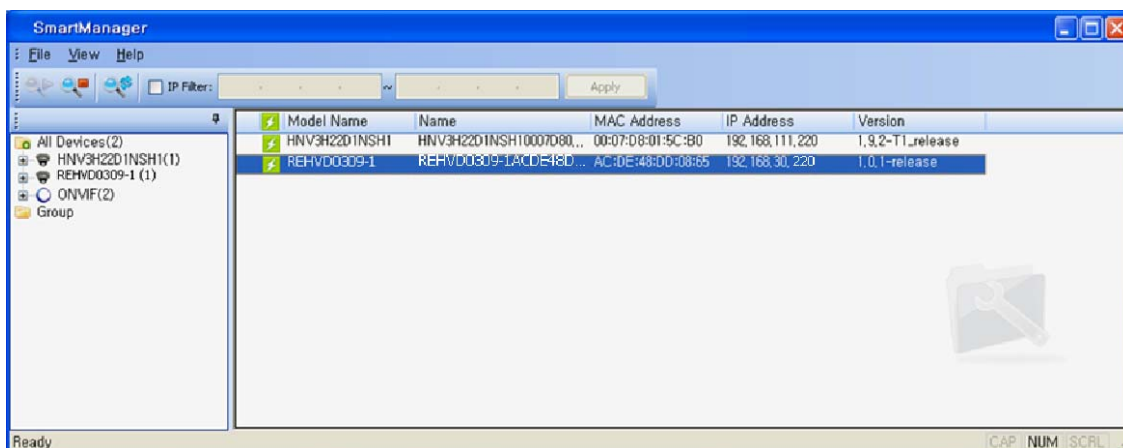
Connect the power of DC12V or AC24V max. 4.0Watt for the network camera. Connect the positive(+) pole to the '+' position and the negative(-) pole to the '-' position for the DC power. Use certified / Listed Class 2 power source only.

2.3 Network Connection and IP assignment

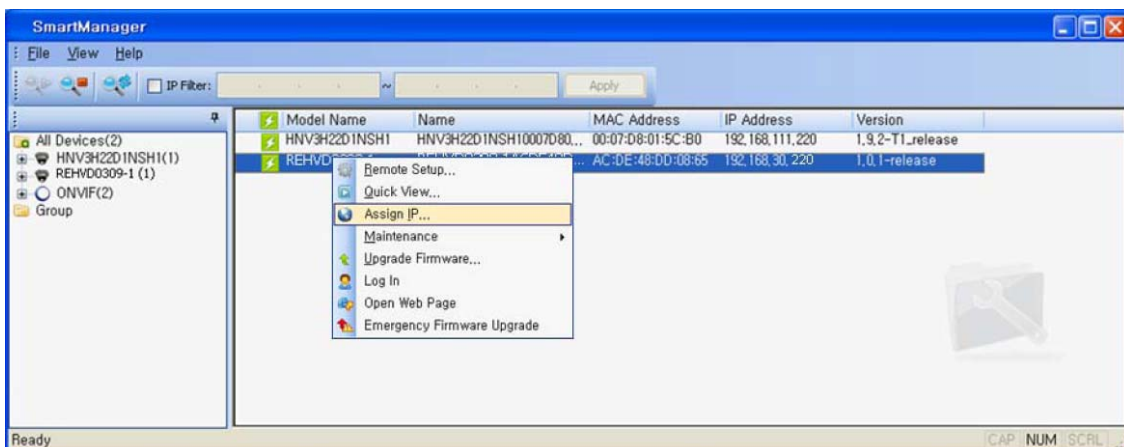
The Network Camera supports the operation through the network. When a camera is first connected to the network it has no IP address. So, it is necessary to allocate an IP address to the device with the "Smart Manager" utility on the CD.

1. Connect the Network Camera / device to the network and power it up.
2. Start SmartManager utility (All Programs>SmartManager>SmartManager), the main window will be displayed, after a short while any network devices connected to the network will be displayed in the list.

REHVD0309-1, Quick Installation Guide



3. Select the camera on the list and click right button of the mouse. You can see the pop-up menu as below.



4. Select Assign IP. you will see an Assign IP window. Enter the required IP address.



Note: For more information, refer to the SmartManager User's Manual.

3. Operation

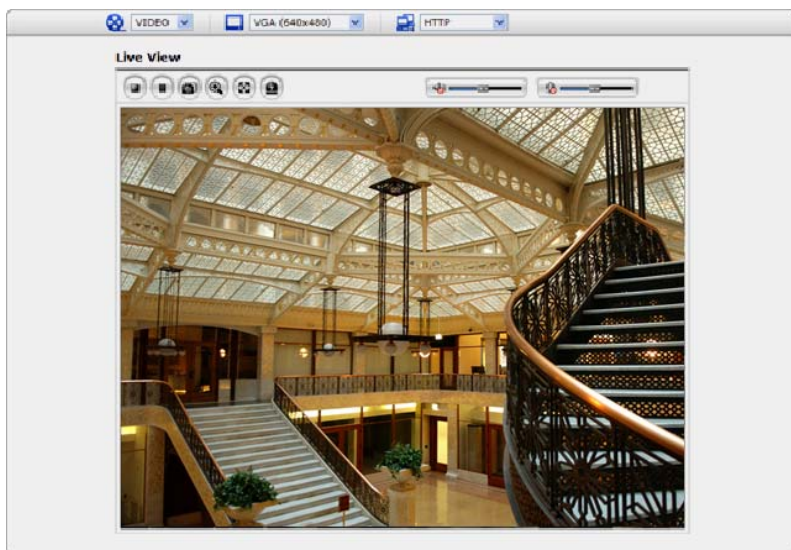
The Network Camera can be used with Windows operating system and browsers. The recommended browsers are Internet Explorer, Safari, Firefox, Opera and Google Chrome for Windows.

3.1 Access from a browser

1. Start a browser (Internet Explorer).
2. Enter the IP address or host name of the Network Camera in the Location/Address field of your browser.
3. You can see the starting page. Click Live View or Setup to enter web page.



4. The network camera's **Live View** page appears in your browser.



3.2. Access from the internet

Once connected the Network Camera on your local network (LAN) will be accessible via internet. To access the network camera from the Internet you must configure your broadband router to allow incoming data traffic to the network camera. To do this, enable the NAT-traversal feature, which will attempt to automatically configure the router to allow access to the network camera. This is enabled from Setup > System > Network > NAT.

For more information, please see "3.5.5 System>Network>NAT" of User's Manual.

3.3 Setting the admin password over a secure connection

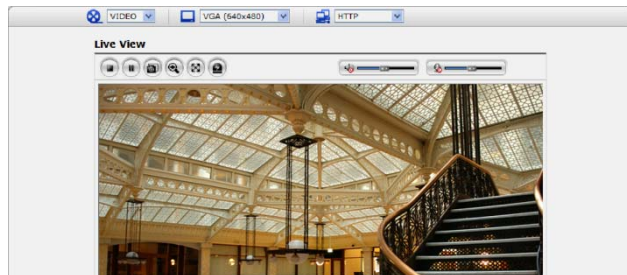
To gain access to the product, the password for the administrator must be set. This is done in the “Admin Password” dialog, which is displayed when the network camera is accessed for setup the first time. Enter your admin name and password.

Note: The default administrator username and password is “admin”. If the password is lost, the Network Camera must be reset to the factory default settings. See “3.6 Resetting to the Factory Default Settings”.

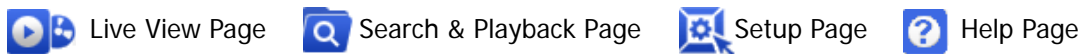


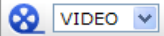
3.4 Live View Page

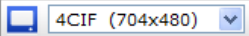
The live view page comes in eight screen modes: 1920x1080, 1280x1024, 1280x720, 720x480(576), 640x480, 352x240(288), and 320x240. Users are allowed to select the most suitable one out of those modes. Please, adjust the mode in accordance with your PC specifications and monitoring purposes.

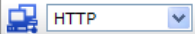


1) General controls












 The video drop-down list allows you to select a customized or pre-programmed video stream on the live view page. Stream profiles are configured under Setup > Basic Configuration > Video & Image. . For more information, please see “3.5.1 Basic Configuration > Video & Image” of User’s Manual.

 The resolution drop-down list allows you to select the most suitable one out of video resolutions to be displayed on live view page.

 The protocol drop-down list allows you to select which combination of protocols and methods to use depending on your viewing requirements, and on the properties of your network.

2) Control toolbar

The live viewer toolbar is available in the web browser page only. It displays the following buttons:

-  The Stop button stops the video stream being played. Pressing the key again toggles the start and stop. The Start button connects to the network camera or starts playing a video stream.
-  The Pause button pauses the video stream being played.
-  The Snapshot button takes a snapshot of the current image. The location where the image is saved can be specified.
-  The digital zoom activates a zoom-in or zoom-out function for the video image on the live screen.
-  The Full Screen button causes the video image to fill the entire screen area. No other windows will be visible. Press the 'Esc' button on the computer keyboard to cancel full screen view.
-  The Manual Trigger button activates a pop-up window to manually start or stop the event.
-  Use this scale to control the volume of the speakers.
-  Use this scale to control the volume of the microphone.
-  Use this scale to control the volume of the speakers and microphones.

3) Video and Audio Streams

The network camera provides several images and video stream formats. Your requirements and the properties of your network will determine the type you use.

The Live View page in the network camera provides access to H.264, MPEG-4 and Motion JPEG video streams, and to the list of available video streams. Other applications and clients can also access these video streams/images directly, without going via the Live View page.

3.5 Network Camera Setup

This section describes how to configure the network camera, and is intended for product Administrators, who have unrestricted access to all the Setup tools; and Operators, who have access to the settings for Basic, Live View, Video & Image, Audio, Event, and System Configuration.

You can configure the network camera by clicking Setup in the top right-hand corner of the Live View page. Click on this page to access the online help that explains the setup tools

When accessing the Network Camera for the first time, the "Admin Password" dialog appears. Enter your admin name and password, set by the administrator.

Note: If the password is lost, the Network Camera must be reset to the factory default settings. See "3.6 Resetting to the Factory Default Settings".



3.6 Resetting to the factory default settings

To reset the Network Camera to the original factory settings, go to the Setup>System >Maintenance web page (described in "3.5.5 System>Maintenance" of the User's Manual) or use the control button on the network camera, as described below:

Follow the instructions below to reset the Network Camera to the factory default settings using the Reset Button.

1. Switch off the Network Camera by disconnecting the power adapter.
2. Press and hold the Control Button with a straightened paperclip while reconnecting the power.
3. Keep the Control button pressed until the Status and Power indicator blink.
4. Release the Control Button.
5. When the Power Indicator changes to Green (may take up to 1 minute), the process is complete and the network video transmitter has been reset.
6. The transmitter resets to factory defaults and restarts after completing the factory reset.

CAUTION: When performing a Factory Reset, you will lose any settings you have saved.

3.7 More Information

For more information, please see the Network Camera User's Manual, which is available on the CD included in this package.