



CAUTION

RISK OF ELECTRIC SHOCK
DO NOT OPEN

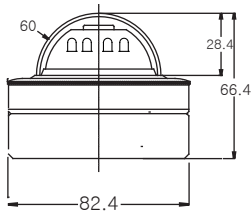


CAUTION : TO REDUCE THE RISK OF ELECTRIC SHOCK,
DO NOT REMOVE COVER
NO USER SERVICEABLE PARTS INSIDE
REFER SERVICING TO QUALIFIED SERVICE PERSONNEL

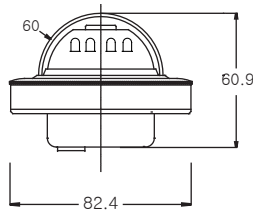
Dimensions

Part name & Dimension

Surface Mount



Flush Mount



Accessories



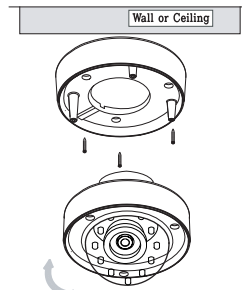
Mount Screws



L-wrench

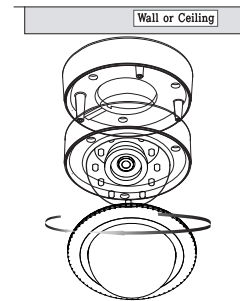
Installation

Step.1



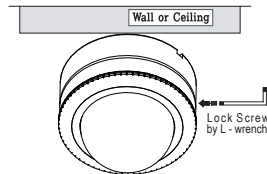
Fix the surface mount bracket to a wall or ceiling using suitable screws

Step.2



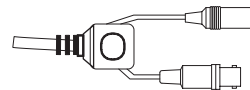
Fix the camera base onto the mount surface bracket using screws and adjust desired focus and scene by turning the camera bracket

Step.3



Fix the dome cover onto the base using the L-wrench

Cable



CAUTION ! Please use regulated power supply DC12V 300mA
Reverse Polarity Protection

Features

- 1/3" 410K Sony Super HAD II Color CCD
- 600 TV Lines of resolution
- Advanced DNR (Digital Noise Reduction)
- D-WDR for clear vivid pictures where strong back-lighting occurs
- IR Smart for better night vision performance
- 3.6mm fixed lens
- Flush vandal dome with surface base
- Gimbal bracket
- Digital Zoom
- Compact design
- Weatherproof IP-66 compliant

Specifications

TV System	NTSC	PAL
Image pick-up Device	1/3" 410K Sony super HAD II color CCD	
Number of Pixels	H	768
	V	494
Scanning Frequency	H	15.734KHz
	V	59.94Hz
Horizontal Resolution	Color : 600TV Lines	
S/N Ratio	More than 50dB	
Min. Sensitivity	0.1 Lux at F : 1.4	
IR LED	11 pcs of IR LEDs	
Scanning System	2:1 Interlace	
Gamma Correction	0.45 Approx.	
Gain Control	Automatic	
Video Output	Composite Video 1.0Vp-p/75Ω	
Lens	Fixed 3.6mm Lens	
Power Source	12VDC, 140mA minimum	
Power Consumption	1.7 Watt	
Operating Temp.	-10°C ~ +50°C	
Dimensions (mm)	Flush : 61mm(D) x 82.4mm(L)	
	Surface : 66.4mm(D) x 82.4mm(L)	
Weight(g)	400g	



Model No. : REVDM600-1
(DC 12V 140mA /NTSC)
REVO AMERICA
700 FREEPORT PARKWAY SUITE 100 COPPELL,
TX 75019 U.S.A. TEL: 1-866-625-REVO(7386)